

Appendices



SANTA ROSA JUNIOR COLLEGE





SANTA ROSA JUNIOR COLLEGE



Appendices

Sonoma County Junior College District

Student Achievement Data

Provided by the Office of Institutional Research

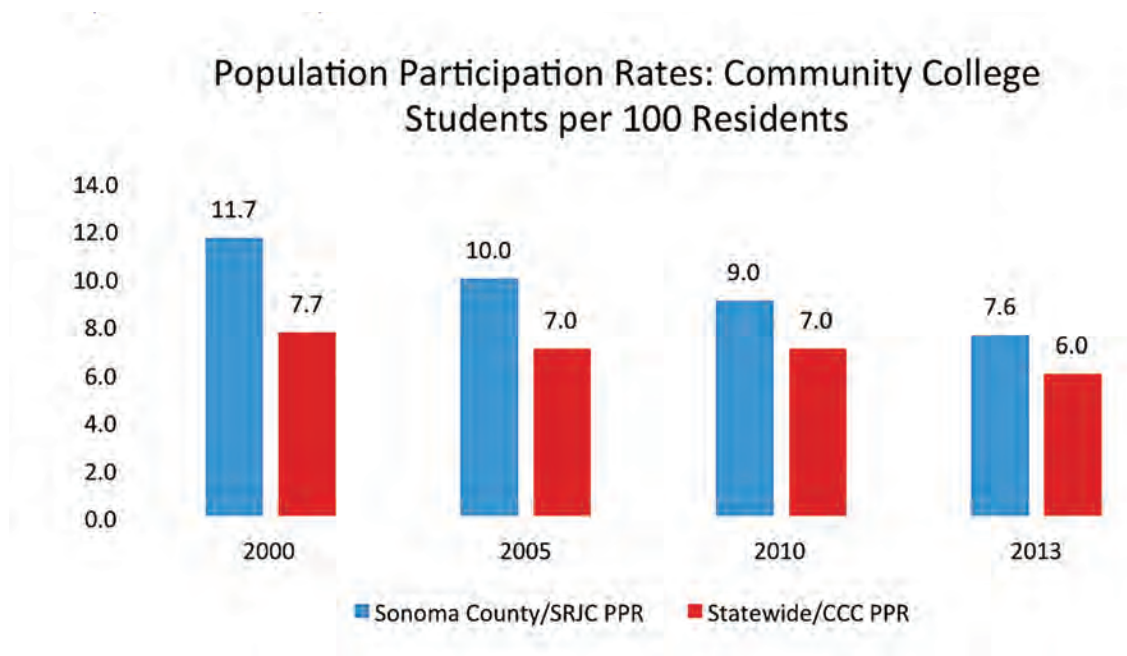
Appendix A: Data on Incoming Students

Appendix B: Data on Enrolled Students

Appendix C: Data on Graduates

Appendix D: Career and Technical Education (CTE) Employment Outcomes Survey 2014

Appendix A: Data on Incoming Students

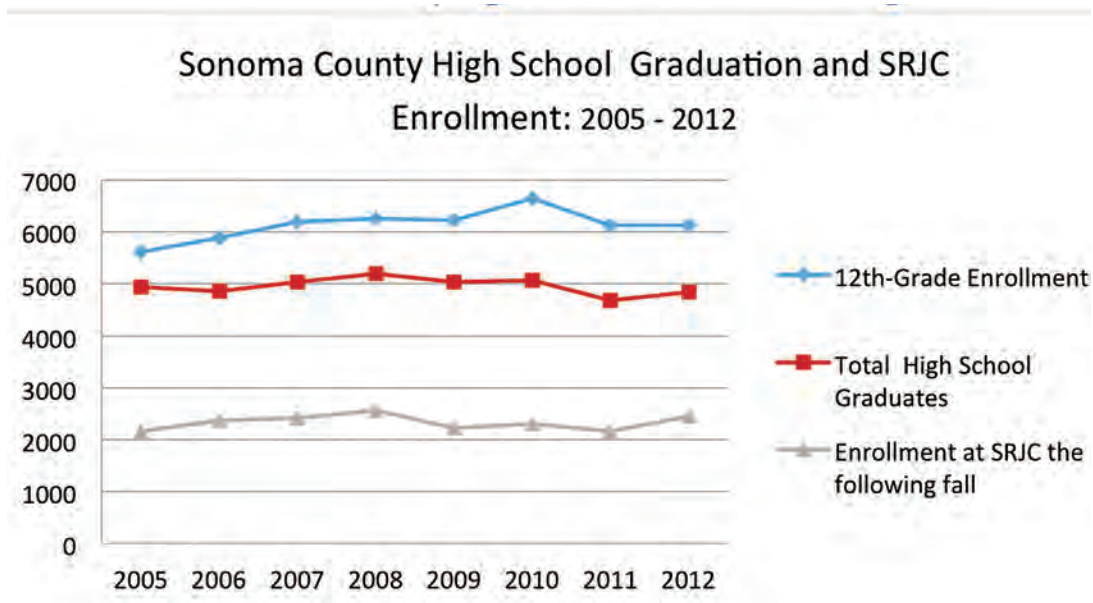


Population Participation Rates

| | Sonoma County Population | SRJC Annual Student Headcount | Sonoma County PPR | California State Population | CCC Annual Student Headcount | Statewide PPR |
|------|--------------------------|-------------------------------|-------------------|-----------------------------|------------------------------|---------------|
| 2013 | 495,025 | 37,569 | 7.60% | 38,332,521 | 2,283,288 | 6.00% |
| 2010 | 483,878 | 43,744 | 9.00% | 37,253,956 | 2,610,204 | 7.00% |
| 2005 | 476,192 | 47,404 | 10.00% | 35,885,415 | 2,515,375 | 7.00% |
| 2000 | 458,614 | 53,520 | 11.70% | 33,871,648 | 2,606,400 | 7.70% |

Source: Institutional Effectiveness Report, <http://www.santarosa.edu/administration/planning/institutional-effectiveness.php>
<http://accreditation.santarosa.edu/>

Annual Yield of Sonoma County High School Students Attending SRJC



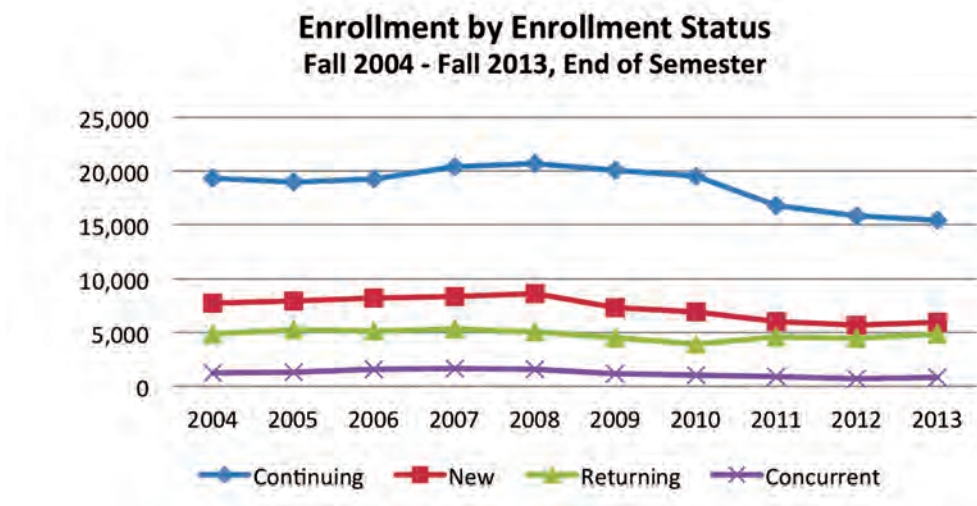
Source: SRJC Fact Book - <http://www.santarosa.edu/research/fact-books.php>

Sonoma County High School Students

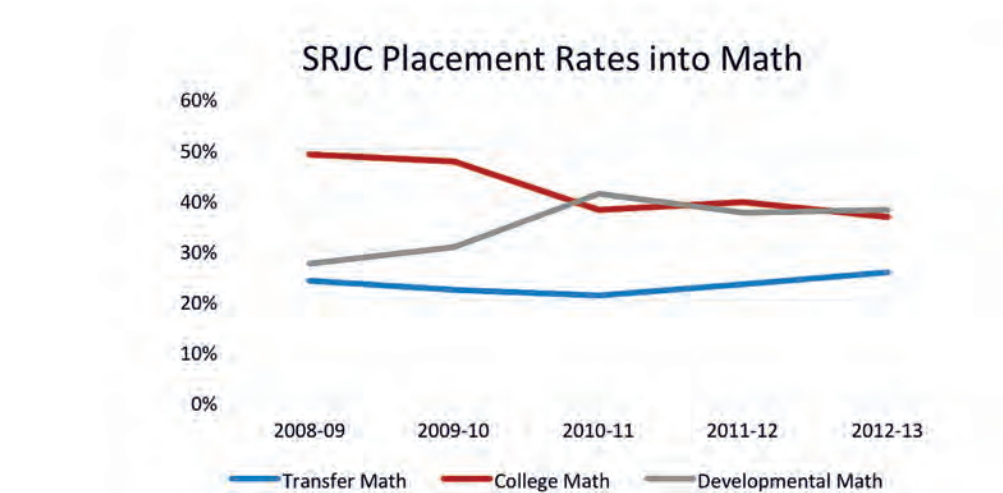
| Year | SoCo High School Graduation Rates | | | SoCo HS Grads enrolling in SRJC the following Fall* | |
|-------------|-----------------------------------|-----------------------------|----------------------------|---|--------------------------|
| | 12th-Grade Enrollment | Total High School Graduates | 12th-Grade Graduation Rate | # | % of Total SoCo HS Grads |
| 2005 | 5,607 | 4,934 | 88.0% | 2,160 | 43.8% |
| 2006 | 5,888 | 4,857 | 82.5% | 2,380 | 49.0% |
| 2007 | 6,192 | 5,037 | 81.3% | 2,430 | 48.2% |
| 2008 | 6,253 | 5,198 | 83.1% | 2,562 | 49.3% |
| 2009 | 6,225 | 5,026 | 80.7% | 2,234 | 44.4% |
| 2010 | 6,647 | 5,059 | 76.1% | 2,304 | 45.5% |
| 2011 | 6,126 | 4,674 | 76.3% | 2,164 | 46.3% |
| 2012 | 6,123 | 4,832 | 78.9% | 2,451 | 50.7% |

Source: SRJC Fact Book - <http://www.santarosa.edu/research/fact-books.php>

Student Enrollment by Enrollment Status



Students Placing at the Basic Skills or Transfer Level

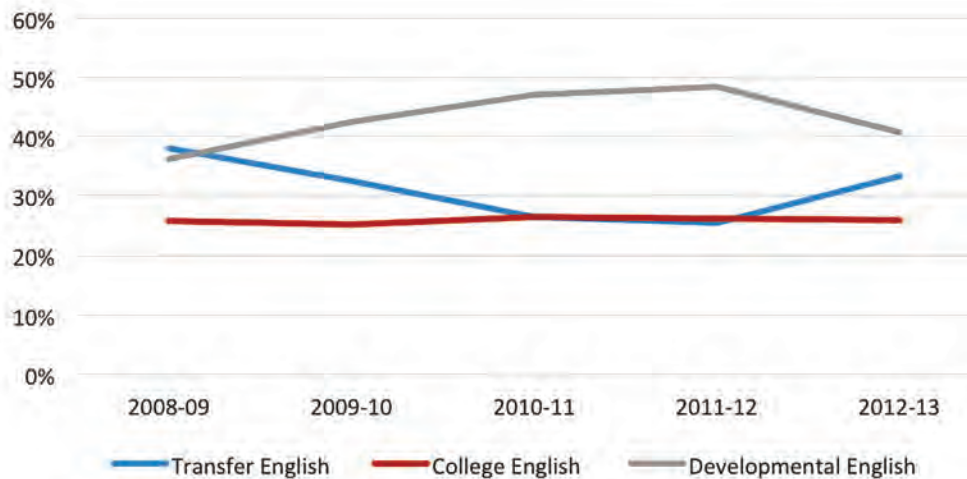


| | 2008-09 | | 2009-10 | | 2010-11 | | 2011-12 | | 2012-13 | |
|--------------------|---------|-------|---------|-------|---------|-------|---------|-------|---------|-------|
| Transfer Math | 1,271 | 23.9% | 1,084 | 22.1% | 1,422 | 21.0% | 1,501 | 23.3% | 1,556 | 25.6% |
| College Math | 2,599 | 48.8% | 2,329 | 47.4% | 2,568 | 37.9% | 2,542 | 39.4% | 2,217 | 36.5% |
| Developmental Math | 1,452 | 27.3% | 1,500 | 30.5% | 2,785 | 41.1% | 2,407 | 37.3% | 2,307 | 37.9% |
| Total | 5,322 | 100% | 4,913 | 100% | 6,775 | 100% | 6,450 | 100% | 6,080 | 100% |

Note: At SRJC, Transfer Math = Math 1A,8A,9,10,15,16,25,27,36,58; College Math = Math 150A/151,155; Developmental Math = CSKLS 100,371,372,368A

Source: Institutional Effectiveness Report - <http://www.santarosa.edu/administration/planning/institutional-effectiveness.php>

SRJC Placement Rates into English



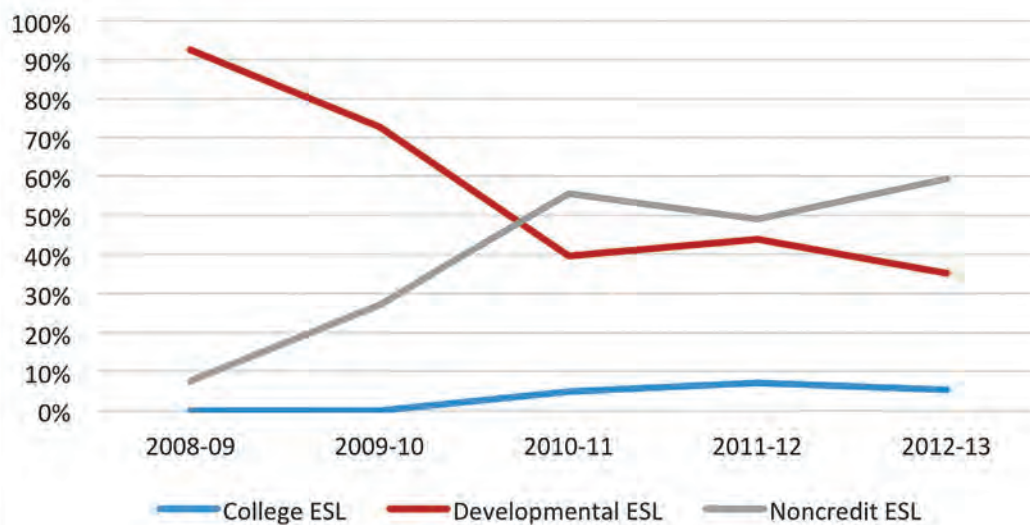
| | 2008-09 | | 2009-10 | | 2010-11 | | 2011-12 | | 2012-13 | |
|-----------------------|---------|-------|---------|-------|---------|-------|---------|-------|---------|-------|
| Transfer English | 2,462 | 38.0% | 2,150 | 32.4% | 1,782 | 26.5% | 1,587 | 25.4% | 1,940 | 33.3% |
| College English | 1,670 | 25.8% | 1,665 | 25.1% | 1,781 | 26.5% | 1,634 | 26.2% | 1,509 | 25.9% |
| Developmental English | 2,343 | 36.2% | 2,811 | 42.4% | 3,169 | 47.1% | 3,026 | 48.4% | 2,372 | 40.7% |
| Total | 6,475 | 100% | 6,626 | 100% | 6,732 | 100% | 6,247 | 100% | 5,821 | 100% |

Note: At SRJC, Transfer English = English 1A, College English = English 100, Developmental English = English 302,305,355,357 CSKLS 313,318

Source: Institutional Effectiveness Report -

<http://www.santarosa.edu/administration/planning/institutional-effectiveness.php>

SRJC Placement Rates into ESL English as a Second Language



SRJC Placement Rates into ESL English as a Second Language

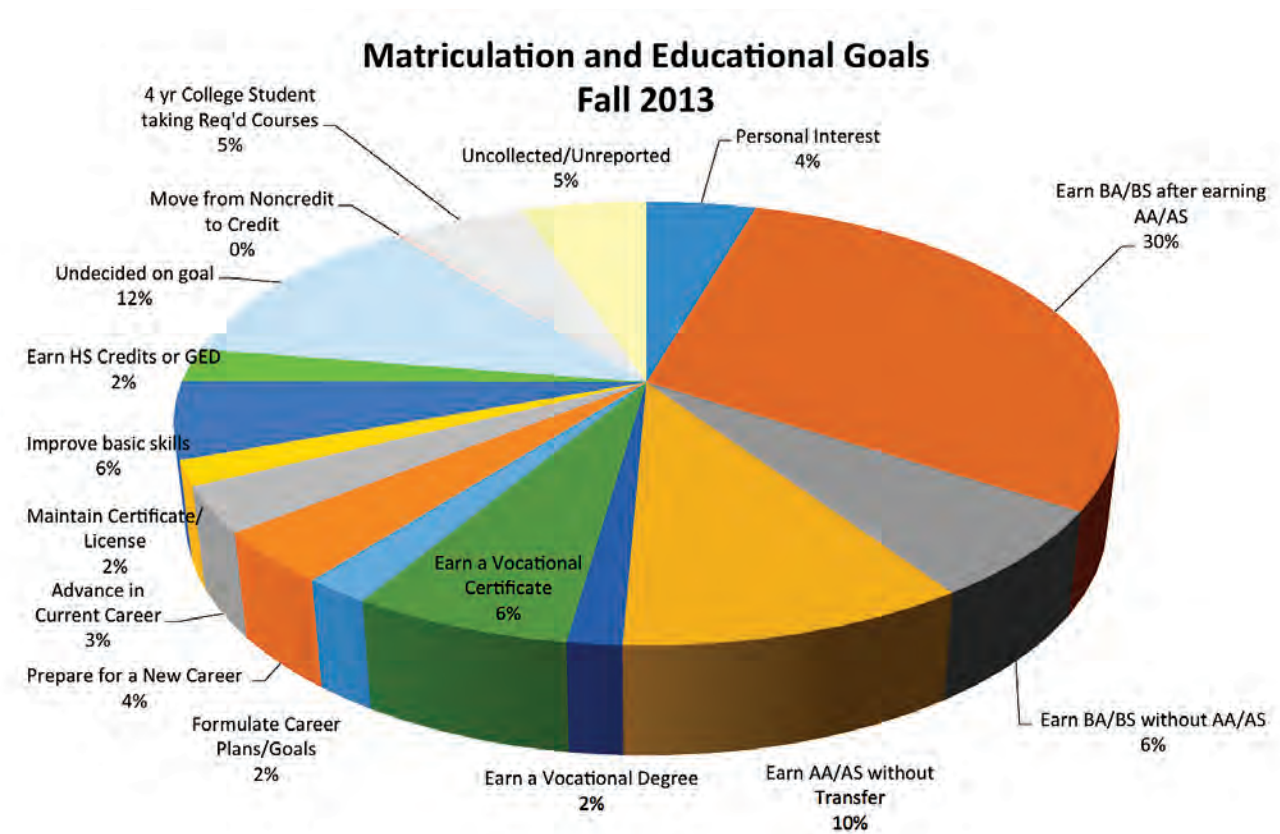
| | 2008-09 | | 2009-10 | | 2010-11 | | 2011-12 | | 2012-13 | |
|-------------------|---------|-------|---------|-------|---------|-------|---------|-------|---------|-------|
| College ESL | - | 0.0% | - | 0.0% | 94 | 4.9% | 112 | 7.2% | 109 | 5.4% |
| Developmental ESL | 879 | 92.5% | 730 | 72.8% | 761 | 39.5% | 683 | 43.8% | 706 | 35.1% |
| Noncredit ESL | 71 | 7.5% | 273 | 27.2% | 1,070 | 55.6% | 764 | 49.0% | 1,195 | 59.5% |
| Total | 950 | 100% | 1,003 | 100% | 1,925 | 100% | 1,559 | 100% | 2,010 | 100% |

Note: SRJC does not offer a transfer level ESL course. At SRJC, one level below transfer = English 100.

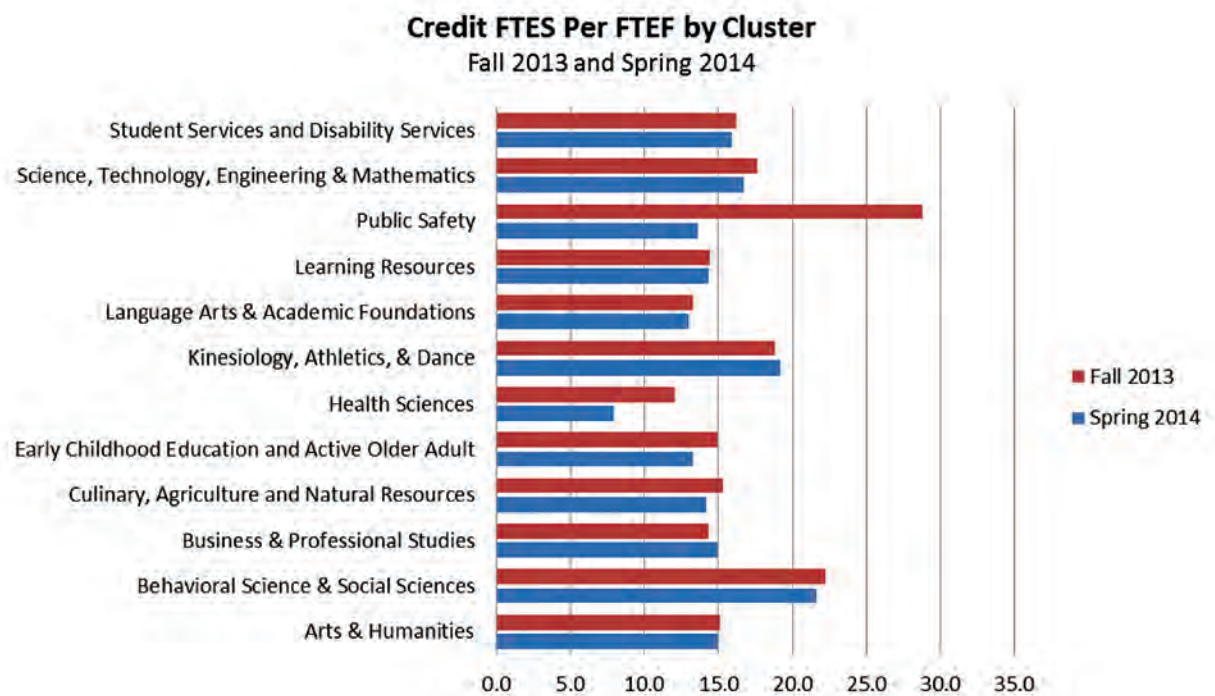
Source: Institutional Effectiveness Report - <http://www.santarosa.edu/administration/planning/institutional-effectiveness.php>

Appendix B: Data on Enrolled Students

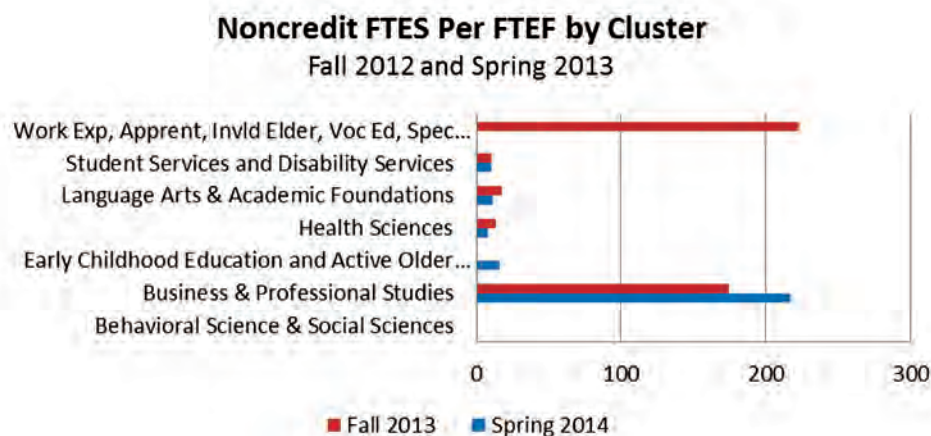
Student Goals



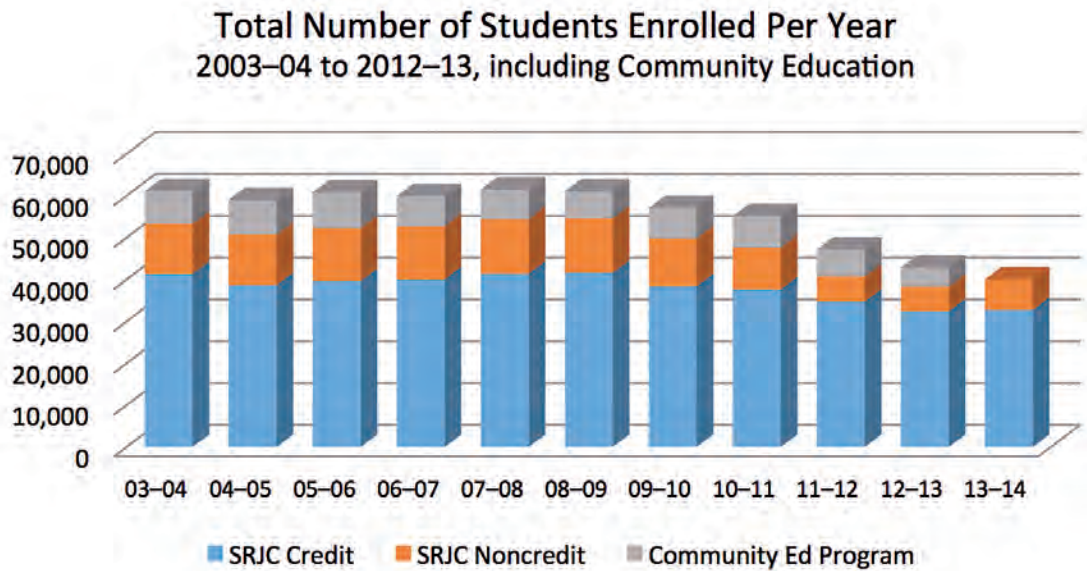
Source: SRJC Fact Book - <http://www.santarosa.edu/research/fact-books.php>

FT/PT student enrollment across the institution range of instructional programs

Source: SRJC Fact Book - <http://www.santarosa.edu/research/fact-books.php>

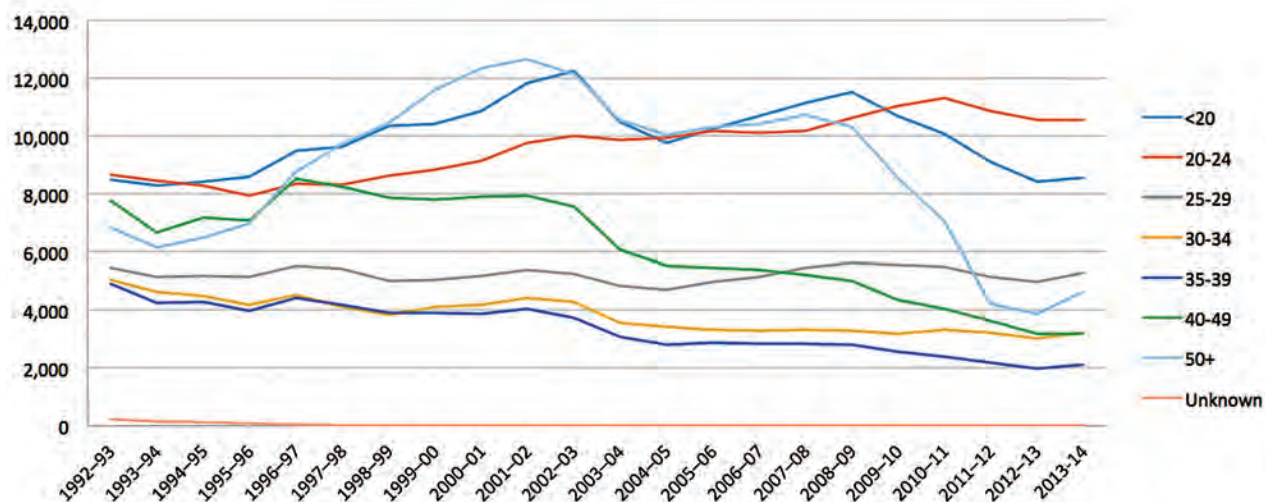


Source: SRJC Fact Book - <http://www.santarosa.edu/research/fact-books.php>

Annual growth/decline in headcount enrollment

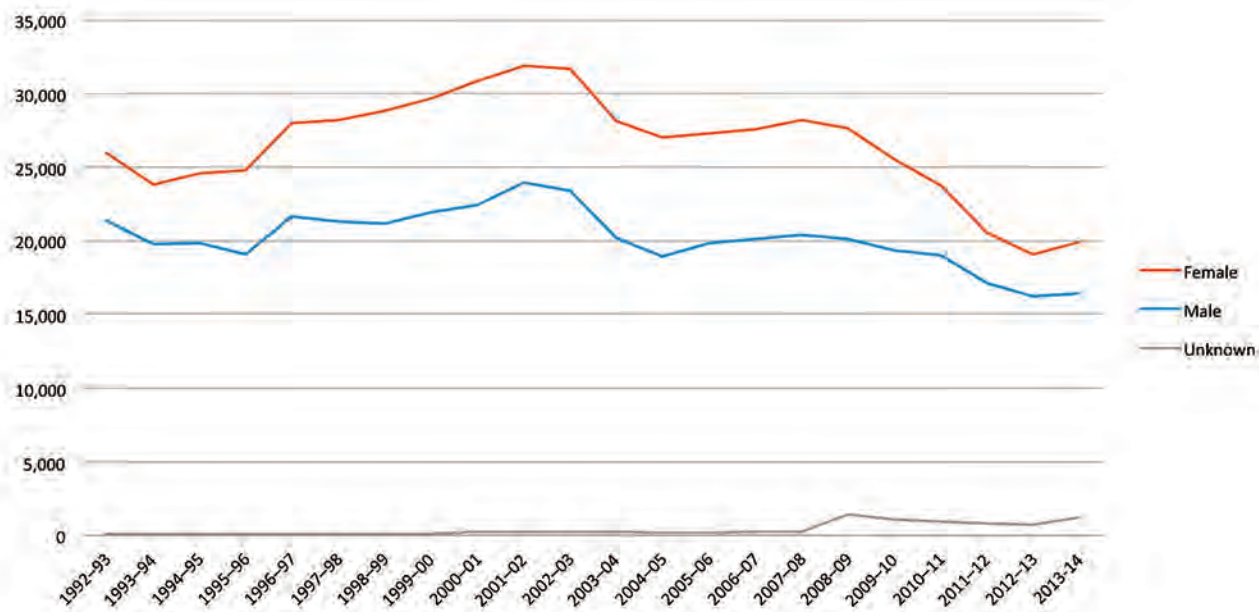
| | Unduplicated Credit Headcount | | Unduplicated Non-Credit Headcount | | Unduplicated Community Education Headcount | | Total Number of Students Enrolled | |
|----------------|-------------------------------|-----------------------------|-----------------------------------|-----------------------------|--|-----------------------------|-----------------------------------|-----------------------------|
| | # | % change from previous year | # | % change from previous year | # | % change from previous year | # | % change from previous year |
| 2003–04 | 41,342 | -13.5% | 11,987 | -4.7% | 7,714 | 24.0% | 61,043 | -8.3% |
| 2004–05 | 38,667 | -6.5% | 12,001 | 0.1% | 8,328 | 8.0% | 58,996 | -3.4% |
| 2005–06 | 39,588 | 2.4% | 12,635 | 5.3% | 8,540 | 2.5% | 60,763 | 3.0% |
| 2006–07 | 40,008 | 1.1% | 12,746 | 0.9% | 7,106 | -16.8% | 59,860 | -1.5% |
| 2007–08 | 41,384 | 3.4% | 13,017 | 2.1% | 7,079 | -0.4% | 61,480 | 2.7% |
| 2008–09 | 41,563 | 0.4% | 13,042 | 0.2% | 6,419 | -9.3% | 61,024 | -0.7% |
| 2009–10 | 38,358 | -7.7% | 11,425 | -12.4% | 7,242 | 12.8% | 57,025 | -6.6% |
| 2010–11 | 37,651 | -1.8% | 9,992 | -12.5% | 7,444 | 2.8% | 55,087 | -3.4% |
| 2011–12 | 34,726 | -7.8% | 5,947 | -40.5% | 6,431 | -13.6% | 47,104 | -14.5% |
| 2012–13 | 32,373 | -6.8% | 5,909 | -0.6% | 4,494 | -30.1% | 42,776 | -9.2% |
| 2013-14 | 32,675 | 0.9% | 7,288 | 23.3% | 5,815 | 29.4% | 45,778 | 7.0% |

Annual Enrollment by Age, 1992-93 to 2013-14

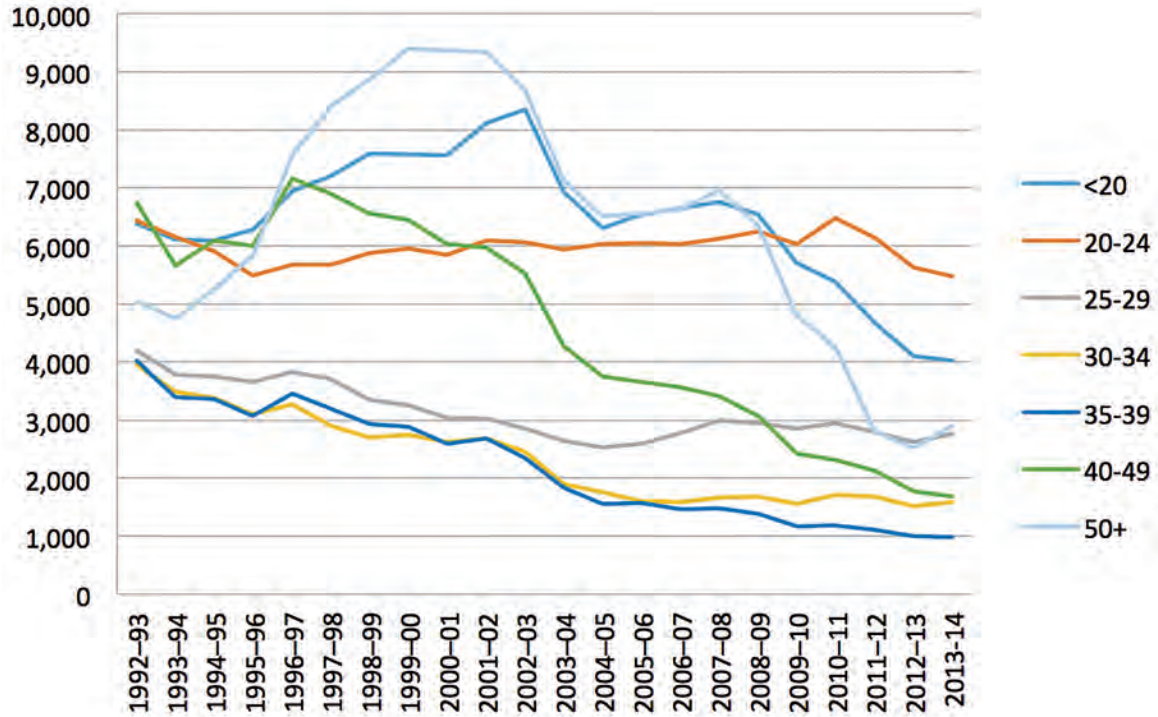


Annual Enrollment by Gender and Ethnicity

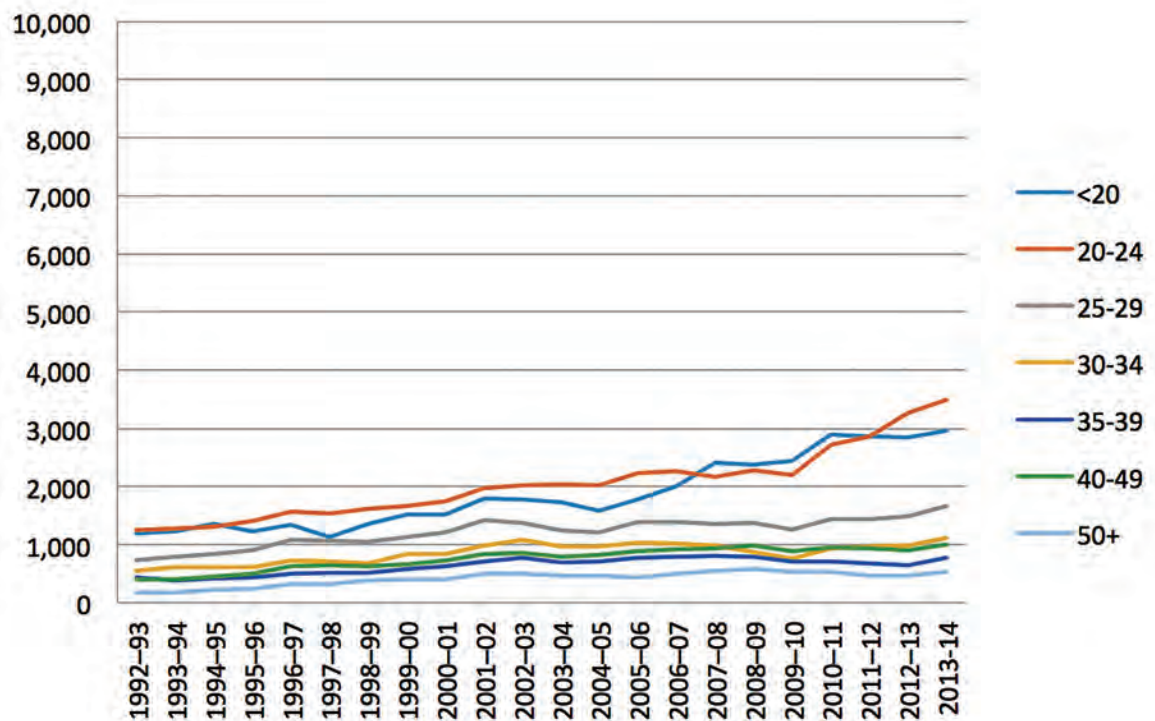
Annual Enrollment by Gender, 1992-93 to 2013-14



Source: CCCO Datamart 2.0 Annual Student Count Report – <http://datamart.cccco.edu/>

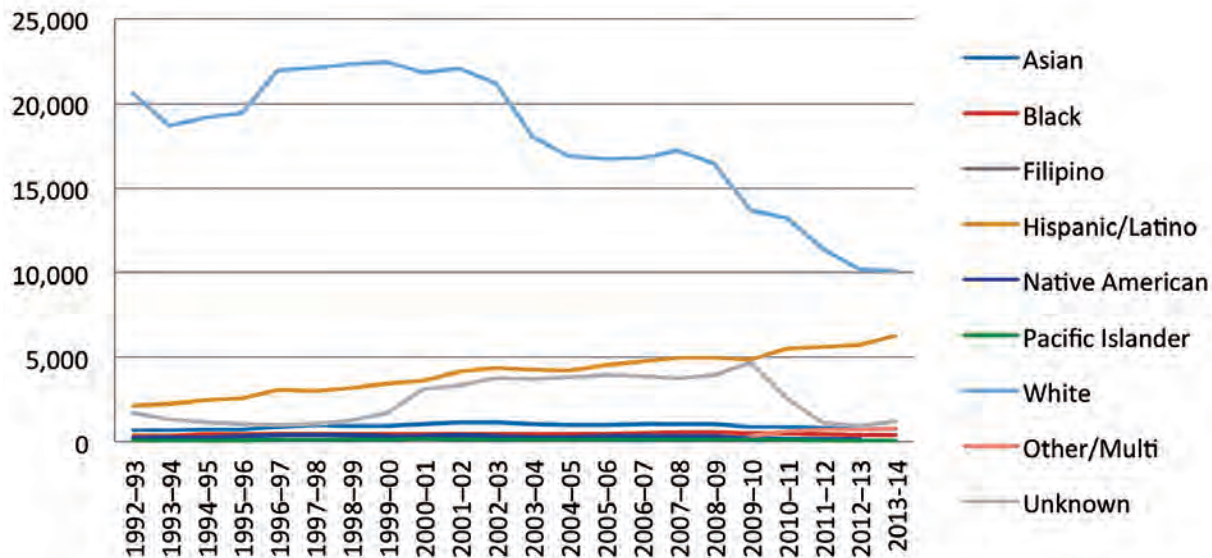
White Annual Count by Age

Source: CCCO Datamart 2.0 Annual Student Count Report – <http://datamart.cccco.edu/>

Hispanic/Latino(a) Annual Count by Age

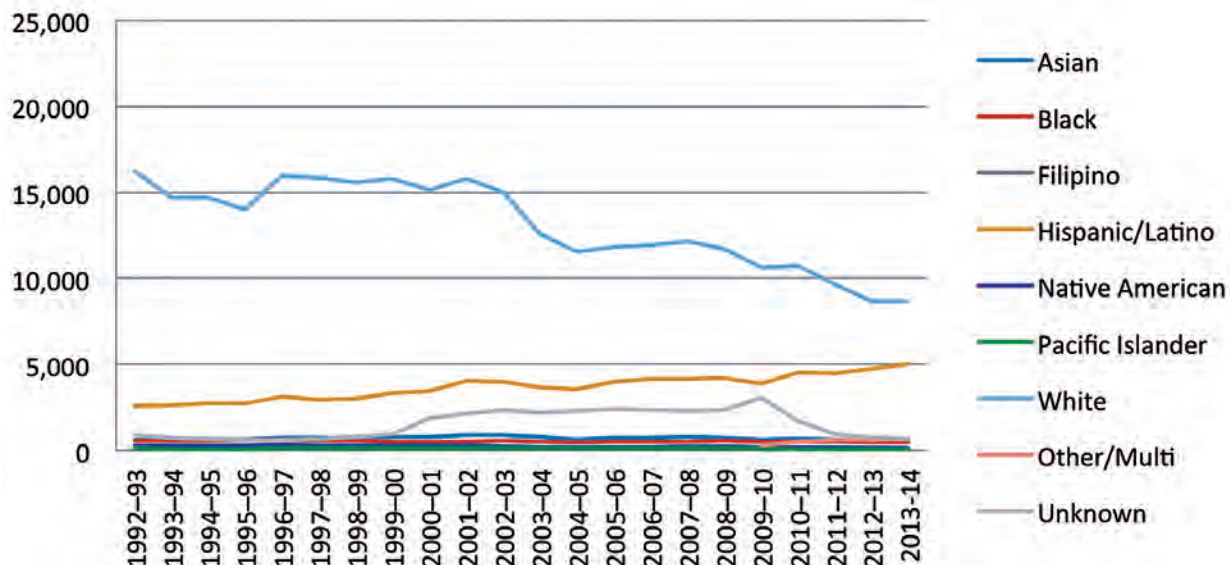
Source: CCCO Datamart 2.0 Annual Student Count Report – <http://datamart.cccco.edu/>

Female Annual Enrollment by Ethnicity, 1992-93 to 2013-14



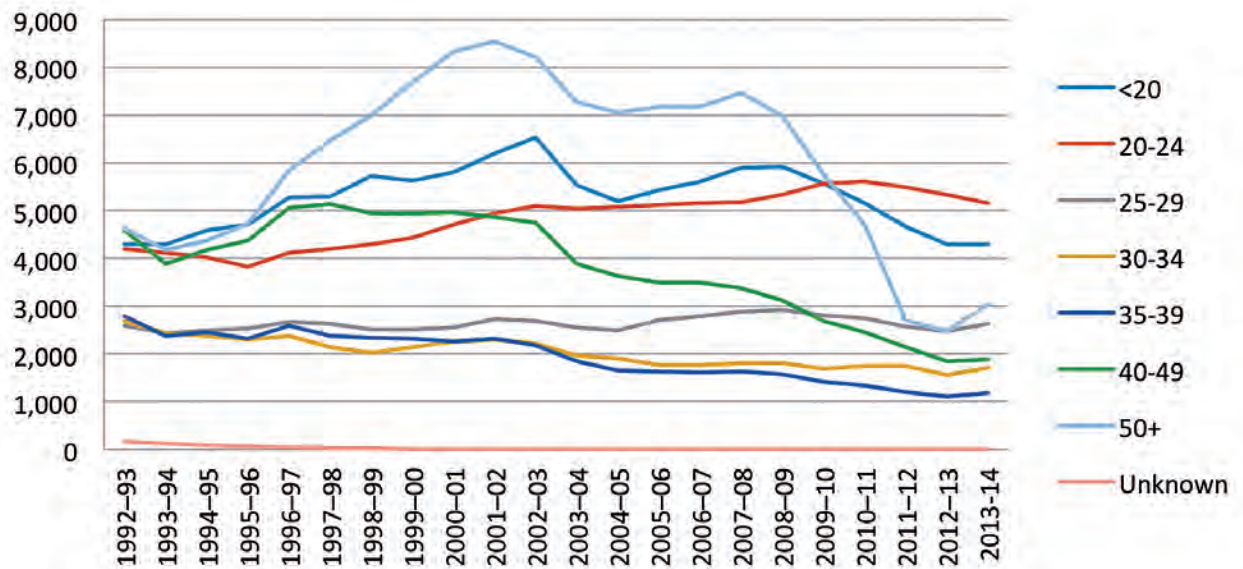
Source: CCCO Datamart 2.0 Annual Student Count Report – <http://datamart.cccco.edu/>

Male Annual Enrollment by Ethnicity, 1992-93 to 2013-14



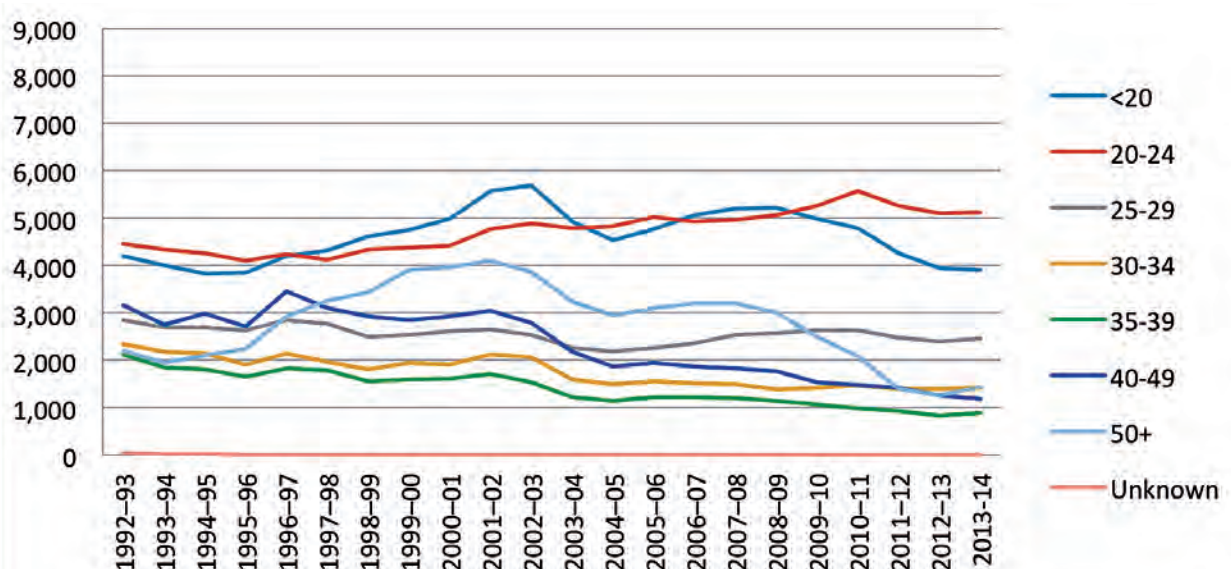
Source: CCCO Datamart 2.0 Annual Student Count Report – <http://datamart.cccco.edu/>

Female Annual Enrollment by Age, 1992-93 to 2013-14



Source: CCCO Datamart 2.0 Annual Student Count Report – <http://datamart.cccco.edu/>

Male Annual Enrollment by Age, 1992-93 to 2013-14



Source: CCCO Datamart 2.0 Annual Student Count Report – <http://datamart.cccco.edu/>

STUDENT SUCCESS, COMPLETION, RETENTION

Completion/Student Progress and Attainment SPA

Cohort 03/04-08/09 04/05-09/10 05/06-10/11 06/07-11/12 07/08-12/13

Overall

| | | | | | |
|-------------|-------|-------|-------|-------|-------|
| SRJC | 51.7 | 54.1 | 53.5 | 53.1 | 54.4 |
| Cohort size | 2,170 | 1,915 | 2,641 | 2,560 | 2,741 |
| State | 46.9 | 48.1 | 48.9 | 49.2 | 48.1 |

| | | | | | |
|------------------|-------|-------|-------|-------|-------|
| White | 56.3 | 55.7 | 55.6 | 56.4 | 57.7 |
| Cohort size | 1,423 | 1,291 | 1,744 | 1,645 | 1,745 |
| Asian | 55.3 | 61.4 | 57.2 | 52.8 | 65.2 |
| Cohort size | 94 | 88 | 138 | 123 | 135 |
| Black | 39.7 | 57.6 | 51.9 | 52.9 | 53.7 |
| Cohort size | 58 | 59 | 77 | 87 | 95 |
| Hispanic | 36.3 | 40.4 | 44.8 | 40.9 | 39.5 |
| Cohort size | 344 | 277 | 431 | 421 | 483 |
| Native American | 21.4 | 42.1 | 27.6 | 44.1 | 45.8 |
| Cohort size | 28 | 19 | 29 | 34 | 24 |
| Pacific Islander | 45 | 35.3 | 50 | 27.8 | 48 |
| Cohort size | 20 | 17 | 18 | 18 | 25 |
| Filipino | 63.6 | 66.7 | 70.8 | 55.3 | 53.8 |
| Cohort size | 33 | 27 | 24 | 38 | 26 |

| | | | | | |
|-------------|-------|-----|-------|-------|-------|
| Female | 51.5 | 56 | 56 | 55.4 | 56.2 |
| Cohort size | 1,106 | 987 | 1,371 | 1,302 | 1,418 |
| Male | 51.7 | 52 | 50.9 | 50.6 | 52.5 |
| Cohort size | 1,052 | 920 | 1,262 | 1,247 | 1,316 |

| | | | | | |
|--------------------|------|------|------|------|------|
| < 20 years old | 54.2 | 56.2 | 56 | 54.9 | 56.5 |
| Cohort size | 1803 | 1613 | 2355 | 2291 | 2441 |
| 20 to 24 years old | 33.3 | 44.1 | 34.6 | 42.1 | 40.3 |
| Cohort size | 159 | 127 | 130 | 133 | 134 |
| 25 to 39 years old | 44.4 | 42 | 32.9 | 32.8 | 35.6 |
| Cohort size | 131 | 112 | 100 | 87 | 106 |
| 40+ years old | 31.6 | 38.9 | 15.4 | 42.9 | 23.5 |
| Cohort size | 77 | 63 | 56 | 49 | 60 |

| | | | | | |
|--------------------------|-------|-------|-------|-------|-------|
| Non-Disabled Students | 52.2 | 54.8 | 54.6 | 53.8 | 55.7 |
| Cohort size | 1,995 | 1,775 | 2,442 | 2,331 | 2,495 |
| Disabled Students (DSPS) | 45.7 | 45.7 | 40.2 | 45.4 | 41.5 |
| Cohort size | 175 | 140 | 199 | 229 | 246 |

| | | | | | |
|---------------------------|-------|-------|-------|-------|-------|
| BOG eligible (low income) | 47.5 | 51.9 | 51.4 | 50.5 | 51.7 |
| Cohort size | 927 | 879 | 1,126 | 1,148 | 1,280 |
| Non-BOG eligible | 54.8 | 56 | 55 | 55.2 | 56.7 |
| Cohort size | 1,243 | 1,036 | 1,515 | 1,412 | 1,461 |

Source: ARCC Report, <http://scorecard.cccco.edu/scorecard.aspx>

SRJC Institutional Effectiveness report -

<http://www.santarosa.edu/administration/planning/institutional-effectiveness.php>

Course Completion - Success Rate by term

| | | Fall | | | | |
|-------------------------------|---|--------|--------|--------|--------|--------|
| | | 2009 | 2010 | 2011 | 2012 | 2013 |
| Non-basic Skills Students | % | 72.0% | 72.1% | 73.5% | 74.0% | 70.1% |
| | # | 64,515 | 62,610 | 59,289 | 56,223 | 54,256 |
| Basic Skills ESL Students | % | 79.6% | 76.4% | 77.2% | 77.4% | 74.8% |
| | # | 1,643 | 1,434 | 1,217 | 1,112 | 1,102 |
| Basic Skills English Students | % | 60.6% | 66.1% | 62.6% | 63.5% | 59.2% |
| | # | 3,915 | 3,474 | 3,397 | 2,883 | 2,768 |
| Basic Skills Math Students | % | 62.6% | 63.9% | 65.8% | 65.4% | 64.6% |
| | # | 2,906 | 3,018 | 3,148 | 3,160 | 8,113 |
| | | | | | | |
| Non-Disabled Students | % | 71.6% | 71.7% | 73.0% | 73.3% | 69.2% |
| | # | 67,965 | 65,493 | 61,811 | 58,317 | 60,562 |
| Disabled Students (DSPS) | % | 67.2% | 69.2% | 69.9% | 72.9% | 69.2% |
| | # | 4,106 | 4,192 | 4,326 | 4,245 | 4,304 |
| | | | | | | |
| Non-BOG Eligible | % | 72.0% | 72.6% | 73.9% | 74.7% | 70.5% |
| | # | 63,418 | 49,990 | 44,479 | 41,092 | 42,489 |
| BOG Eligible (low income) | % | 66.7% | 69.0% | 70.5% | 70.5% | 66.8% |
| | # | 8,653 | 19,695 | 21,658 | 21,470 | 22,377 |
| | | | | | | |
| Age 61+ | % | 75.2% | 73.7% | 79.0% | 74.2% | 73.5% |
| | # | 1,090 | 956 | 771 | 702 | 702 |
| Age 51 to 60 | % | 77.2% | 78.6% | 77.6% | 81.1% | 71.9% |
| | # | 3,077 | 2,783 | 2,369 | 2,142 | 2,379 |
| Age 46 to 50 | % | 78.6% | 79.2% | 79.2% | 79.8% | 76.4% |
| | # | 2,221 | 2,067 | 1,921 | 1,741 | 1,628 |
| Age 41 to 45 | % | 80.0% | 79.0% | 78.2% | 76.8% | 72.3% |
| | # | 2,324 | 2,271 | 2,091 | 1,872 | 1,930 |
| Age 36 to 40 | % | 76.9% | 75.9% | 79.8% | 78.6% | 72.9% |
| | # | 2,670 | 2,271 | 2,418 | 2,240 | 2,312 |
| Age 31 to 35 | % | 77.5% | 76.6% | 76.6% | 76.8% | 72.2% |
| | # | 3,528 | 3,425 | 3,622 | 3,336 | 3,505 |
| Age 26 to 30 | % | 73.4% | 72.9% | 75.3% | 74.6% | 69.8% |
| | # | 6,557 | 6,534 | 6,345 | 6,342 | 6,457 |
| Age 21 to 25 | % | 68.5% | 69.1% | 70.1% | 71.2% | 67.9% |
| | # | 15,537 | 16,247 | 16,258 | 15,511 | 16,704 |
| Age 19 to 20 | % | 68.9% | 69.2% | 71.0% | 72.2% | 69.2% |
| | # | 19,592 | 18,216 | 17,530 | 16,891 | 16,610 |
| Age 0 to 18 | % | 70.2% | 71.1% | 71.8% | 71.9% | 67.2% |
| | # | 15,475 | 14,468 | 12,812 | 11,785 | 12,639 |

| | | Fall | | | | |
|----------------------|---|--------|--------|--------|--------|--------|
| | | 2009 | 2010 | 2011 | 2012 | 2013 |
| Female | % | 73.3% | 73.5% | 74.6% | 75.4% | 71.1% |
| | # | 38,490 | 36,553 | 34,842 | 33,451 | 34,139 |
| Male | % | 69.1% | 69.5% | 70.9% | 70.8% | 67.3% |
| | # | 32,451 | 31,410 | 29,802 | 28,125 | 28,576 |
| Unknown | % | 71.7% | 69.2% | 69.6% | 69.3% | 65.6% |
| | # | 1,130 | 1,722 | 1,493 | 986 | 2,151 |
| | | | | | | |
| Unknown Ethnicity | % | 71.1% | 72.6% | 72.2% | 74.8% | 70.4% |
| | # | 7,169 | 4,100 | 2,696 | 2,071 | 2,497 |
| Multiple Ethnicities | % | 63.7% | 66.4% | 68.5% | 69.5% | 66.3% |
| | # | 3,025 | 6,367 | 7,553 | 8,376 | 9,188 |
| Filipino | % | 74.0% | 76.3% | 78.9% | 79.9% | 74.1% |
| | # | 747 | 595 | 592 | 508 | 528 |
| Pacific Islander | % | 68.9% | 68.8% | 74.3% | 72.4% | 53.4% |
| | # | 485 | 359 | 292 | 243 | 221 |
| Native American | % | 67.7% | 65.6% | 68.9% | 71.2% | 65.3% |
| | # | 485 | 691 | 694 | 520 | 475 |
| Hispanic | % | 67.8% | 67.7% | 69.3% | 69.1% | 64.3% |
| | # | 11,614 | 11,453 | 11,654 | 12,073 | 13,140 |
| Black | % | 64.5% | 64.0% | 65.3% | 66.0% | 61.2% |
| | # | 1,978 | 1,875 | 1,933 | 1,698 | 1,821 |
| Asian | % | 76.0% | 75.3% | 77.4% | 77.0% | 73.2% |
| | # | 2,856 | 2,559 | 2,403 | 2,288 | 2,216 |
| White | % | 72.9% | 73.5% | 74.8% | 75.6% | 72.1% |
| | # | 43,429 | 41,686 | 38,320 | 34,785 | 34,780 |
| | | | | | | |
| Overall | % | 71.3% | 71.6% | 72.8% | 73.3% | 69.2% |
| | # | 72,071 | 69,685 | 66,137 | 62,562 | 64,866 |

Source: PRPP Student Equity Report

Course Completion - Success Rate by term

| | | Spring | | | | |
|-------------------------------|---|--------|--------|--------|--------|--------|
| | | 2009 | 2010 | 2011 | 2012 | 2013 |
| Non-basic Skills Students | % | 72.7% | 72.5% | 73.4% | 74.9% | 73.7% |
| | # | 66,765 | 64,429 | 63,952 | 58,685 | 56,918 |
| Basic Skills ESL Students | % | 73.9% | 79.1% | 72.2% | 76.7% | 78.0% |
| | # | 1,566 | 1,467 | 1,408 | 1,169 | 1,039 |
| Basic Skills English Students | % | 58.3% | 60.1% | 60.9% | 62.1% | 60.8% |
| | # | 2,611 | 2,235 | 2,130 | 2,064 | 2,081 |
| Basic Skills Math Students | % | 63.8% | 65.1% | 63.5% | 67.7% | 68.4% |
| | # | 2,577 | 2,645 | 2,804 | 2,582 | 2,515 |
| | | | | | | |
| Non-Disabled Students | % | 72.2% | 72.1% | 72.8% | 74.5% | 73.3% |
| | # | 68,786 | 66,061 | 65,573 | 59,736 | 57,748 |
| Disabled Students (DSPS) | % | 68.5% | 70.4% | 70.8% | 72.6% | 72.2% |
| | # | 4,040 | 4,061 | 3,987 | 4,191 | 4,159 |
| | | | | | | |
| Non-BOG Eligible | % | 73.2% | 73.1% | 74.4% | 75.9% | 75.0% |
| | # | 57,803 | 60,045 | 49,408 | 43,119 | 40,960 |
| BOG Eligible (low income) | % | 67.4% | 65.8% | 68.6% | 71.1% | 69.7% |
| | # | 15,023 | 10,077 | 20,152 | 20,808 | 20,947 |
| | | | | | | |
| Age 61+ | % | 76.8% | 75.8% | 76.2% | 81.9% | 79.1% |
| | # | 1,485 | 1,013 | 1,035 | 767 | 731 |
| Age 51 to 60 | % | 78.4% | 79.2% | 80.1% | 82.4% | 80.6% |
| | # | 4,112 | 3,079 | 2,839 | 2,462 | 2,268 |
| Age 46 to 50 | % | 79.6% | 79.0% | 80.2% | 83.2% | 82.4% |
| | # | 2,735 | 2,122 | 2,158 | 1,834 | 1,569 |
| Age 41 to 45 | % | 78.3% | 79.7% | 79.6% | 81.5% | 79.5% |
| | # | 2,742 | 2,211 | 2,441 | 2,191 | 1,855 |
| Age 36 to 40 | % | 75.5% | 77.8% | 77.7% | 80.4% | 79.2% |
| | # | 2,907 | 2,806 | 2,679 | 2,523 | 2,177 |
| Age 31 to 35 | % | 75.7% | 76.3% | 76.8% | 78.8% | 78.0% |
| | # | 3,653 | 3,639 | 3,986 | 3,671 | 3,553 |
| Age 26 to 30 | % | 73.5% | 72.2% | 74.6% | 77.4% | 74.7% |
| | # | 6,864 | 7,035 | 6,999 | 6,639 | 6,528 |
| Age 21 to 25 | % | 69.0% | 69.9% | 70.6% | 70.9% | 71.0% |
| | # | 16,278 | 16,690 | 17,755 | 17,187 | 17,110 |
| Age 19 to 20 | % | 70.4% | 69.9% | 70.8% | 72.7% | 71.5% |
| | # | 19,703 | 20,354 | 19,419 | 17,616 | 17,504 |
| Age 0 to 18 | % | 69.8% | 71.1% | 70.3% | 72.1% | 70.9% |
| | # | 12,347 | 11,173 | 10,249 | 9,037 | 8,612 |

| | | Spring | | | | |
|----------------------|---|--------|--------|--------|--------|--------|
| | | 2009 | 2010 | 2011 | 2012 | 2013 |
| Female | % | 73.4% | 73.7% | 74.1% | 76.2% | 75.2% |
| | # | 39,618 | 37,226 | 36,024 | 33,536 | 32,802 |
| Male | % | 70.3% | 70.0% | 71.2% | 72.4% | 70.8% |
| | # | 31,751 | 31,791 | 31,808 | 29,057 | 28,230 |
| Unknown | % | 70.4% | 73.3% | 71.6% | 72.2% | 77.1% |
| | # | 1,457 | 1,105 | 1,728 | 1,334 | 875 |
| | | | | | | |
| Unknown Ethnicity | % | 73.8% | 74.3% | 75.3% | 77.3% | 78.1% |
| | # | 7,121 | 6,841 | 3,771 | 2,548 | 2,047 |
| Multiple Ethnicities | % | 61.9% | 64.8% | 67.5% | 70.3% | 68.8% |
| | # | 1,728 | 3,252 | 6,494 | 7,397 | 8,320 |
| Filipino | % | 73.5% | 72.7% | 75.8% | 78.9% | 75.9% |
| | # | 706 | 634 | 620 | 565 | 523 |
| Pacific Islander | % | 65.1% | 66.7% | 70.1% | 67.9% | 69.0% |
| | # | 536 | 505 | 414 | 324 | 242 |
| Native American | % | 64.5% | 64.8% | 66.9% | 72.3% | 73.4% |
| | # | 893 | 768 | 698 | 620 | 485 |
| Hispanic | % | 67.5% | 68.5% | 67.0% | 68.9% | 68.9% |
| | # | 11,238 | 11,004 | 11,704 | 11,391 | 12,006 |
| Black | % | 65.2% | 63.7% | 63.4% | 69.0% | 64.0% |
| | # | 2,062 | 1,946 | 1,954 | 1,840 | 1,664 |
| Asian | % | 75.7% | 78.6% | 77.8% | 77.7% | 78.1% |
| | # | 3,005 | 2,751 | 2,571 | 2,376 | 2,097 |
| White | % | 73.5% | 73.3% | 75.1% | 76.7% | 75.6% |
| | # | 45,537 | 42,421 | 41,334 | 36,866 | 34,523 |
| | | | | | | |
| Overall | % | 72.0% | 72.0% | 72.7% | 74.4% | 73.2% |
| | # | 72,826 | 70,122 | 69,560 | 63,927 | 61,907 |

Source: PRPP Student Equity Report

Course Completion - Retention Rate by term

| | | Fall | | | | |
|-------------------------------|---|--------|--------|--------|--------|--------|
| | | 2009 | 2010 | 2011 | 2012 | 2013 |
| Non-basic Skills Students | % | 76.1% | 76.3% | 77.8% | 78.4% | 74.0% |
| | # | 64,515 | 62,627 | 59,282 | 56,223 | 54,256 |
| Basic Skills ESL Students | % | 84.2% | 81.7% | 83.3% | 83.9% | 79.0% |
| | # | 1,643 | 1,435 | 1,217 | 1,112 | 1,102 |
| Basic Skills English Students | % | 67.8% | 73.1% | 70.5% | 71.1% | 66.8% |
| | # | 3,915 | 3,474 | 3,397 | 2,883 | 2,768 |
| Basic Skills Math Students | % | 68.4% | 69.3% | 71.7% | 71.5% | 71.2% |
| | # | 2,906 | 3,018 | 3,148 | 3,160 | 8,113 |
| | | | | | | |
| Non-Disabled Students | % | 75.9% | 76.1% | 77.5% | 77.9% | 73.4% |
| | # | 67,965 | 65,510 | 61,811 | 58,317 | 60,562 |
| Disabled Students (DSPS) | % | 72.4% | 74.5% | 75.1% | 78.1% | 74.7% |
| | # | 4,106 | 4,193 | 4,326 | 4,245 | 4,304 |
| | | | | | | |
| Non-BOG Eligible | % | 76.3% | 76.9% | 78.2% | 79.2% | 74.6% |
| | # | 63,418 | 50,007 | 44,479 | 41,092 | 42,489 |
| BOG Eligible (low income) | % | 71.2% | 73.8% | 75.4% | 75.6% | 71.6% |
| | # | 8,653 | 19,696 | 21,658 | 21,470 | 22,377 |
| | | | | | | |
| Age 61+ | % | 76.2% | 75.1% | 80.7% | 76.4% | 74.2% |
| | # | 1,090 | 956 | 771 | 702 | 702 |
| Age 51 to 60 | % | 78.4% | 79.7% | 79.7% | 82.6% | 74.3% |
| | # | 3,077 | 2,788 | 2,369 | 2,142 | 2,379 |
| Age 46 to 50 | % | 80.2% | 80.9% | 81.0% | 82.3% | 78.4% |
| | # | 2,221 | 2,067 | 1,921 | 1,741 | 1,628 |
| Age 41 to 45 | % | 81.9% | 81.7% | 81.0% | 79.7% | 74.6% |
| | # | 2,324 | 2,273 | 2,091 | 1,872 | 1,930 |
| Age 36 to 40 | % | 78.7% | 78.5% | 82.2% | 81.3% | 75.4% |
| | # | 2,670 | 2,719 | 2,418 | 2,240 | 2,312 |
| Age 31 to 35 | % | 79.5% | 79.0% | 79.0% | 79.7% | 74.9% |
| | # | 3,526 | 3,426 | 3,622 | 3,336 | 3,505 |
| Age 26 to 30 | % | 75.8% | 76.0% | 78.3% | 77.4% | 72.5% |
| | # | 6,557 | 6,536 | 6,345 | 6,342 | 6,457 |
| Age 21 to 25 | % | 72.7% | 73.4% | 74.4% | 75.7% | 72.0% |
| | # | 15,537 | 16,248 | 16,258 | 15,511 | 16,704 |
| Age 19 to 20 | % | 74.7% | 74.7% | 76.7% | 78.1% | 74.4% |
| | # | 19,592 | 18,211 | 17,530 | 16,891 | 16,610 |
| Age 0 to 18 | % | 76.4% | 77.4% | 78.2% | 78.1% | 73.2% |
| | # | 15,475 | 14,479 | 12,812 | 11,785 | 12,639 |

| | | Fall | | | | |
|-------------------|---|--------|--------|--------|--------|--------|
| | | 2009 | 2010 | 2011 | 2012 | 2013 |
| Female | % | 77.1% | 77.3% | 78.7% | 79.9% | 75.1% |
| | # | 38,490 | 36,936 | 34,842 | 33,451 | 34,139 |
| Male | % | 74.1% | 74.5% | 75.9% | 75.8% | 72.0% |
| | # | 32,451 | 31,713 | 29,802 | 28,125 | 34,139 |
| Unknown | % | 75.3% | 76.6% | 73.2% | 73.0% | 69.6% |
| | # | 1,130 | 1,054 | 1,493 | 986 | 2,151 |
| | | | | | | |
| Unknown Ethnicity | % | 75.8% | 76.6% | 76.4% | 78.1% | 74.0% |
| | # | 7,169 | 5,549 | 2,696 | 2,071 | 2,497 |
| Pacific Islander | % | 73.4% | 74.9% | 77.1% | 77.8% | 56.6% |
| | # | 485 | 371 | 292 | 243 | 221 |
| Native American | % | 70.4% | 66.7% | 73.9% | 76.4% | 69.3% |
| | # | 768 | 684 | 694 | 520 | 475 |
| Hispanic | % | 73.2% | 73.3% | 75.6% | 75.7% | 70.2% |
| | # | 11,614 | 11,503 | 11,654 | 12,073 | 13,140 |
| Black | % | 70.3% | 70.3% | 71.2% | 73.2% | 66.6% |
| | # | 1,978 | 1,883 | 1,933 | 1,698 | 1,821 |
| Asian | % | 80.5% | 80.1% | 81.6% | 81.4% | 76.4% |
| | # | 2,856 | 2,593 | 2,403 | 2,288 | 2,216 |
| White | % | 76.8% | 77.3% | 78.5% | 79.4% | 75.7% |
| | # | 43,429 | 41,390 | 38,320 | 34,785 | 34,780 |
| | | | | | | |
| Overall | % | 75.7% | 76.0% | 77.3% | 78.0% | 73.5% |
| | # | 72,071 | 69,703 | 66,137 | 62,562 | 64,866 |

Source: PRPP Student Equity Report

Course Completion - Retention Rate by term

| | | Spring | | | | |
|-------------------------------|---|--------|--------|--------|--------|--------|
| | | 2009 | 2010 | 2011 | 2012 | 2013 |
| Non-basic Skills Students | % | 76.4% | 76.5% | 77.3% | 79.1% | 77.9% |
| | # | 66,765 | 64,429 | 63,952 | 58,685 | 56,918 |
| Basic Skills ESL Students | % | 78.5% | 83.4% | 77.8% | 83.4% | 84.0% |
| | # | 1,566 | 1,467 | 1,408 | 1,169 | 1,039 |
| Basic Skills English Students | % | 64.2% | 67.1% | 68.3% | 70.2% | 68.4% |
| | # | 2,611 | 2,235 | 2,130 | 2,064 | 2,081 |
| Basic Skills Math Students | % | 68.5% | 69.9% | 68.9% | 73.3% | 74.2% |
| | # | 2,577 | 2,645 | 2,804 | 2,582 | 2,515 |
| | | | | | | |
| Non-Disabled Students | % | 76.0% | 76.2% | 76.9% | 78.9% | 77.6% |
| | # | 68,786 | 66,061 | 65,573 | 59,736 | 57,748 |
| Disabled Students (DSPS) | % | 73.3% | 75.4% | 75.5% | 77.1% | 77.5% |
| | # | 4,040 | 4,061 | 3,987 | 4,191 | 4,159 |
| | | | | | | |
| Non-BOG Eligible | % | 76.9% | 77.1% | 78.4% | 80.1% | 79.1% |
| | # | 57,803 | 60,045 | 49,408 | 43,119 | 40,960 |
| BOG Eligible (low income) | % | 71.6% | 70.6% | 73.0% | 76.0% | 74.7% |
| | # | 15,023 | 10,077 | 20,152 | 20,808 | 20,947 |
| | | | | | | |
| Age 61+ | % | 78.1% | 76.4% | 76.7% | 82.8% | 79.3% |
| | # | 1,485 | 1,013 | 1,035 | 767 | 731 |
| Age 51 to 60 | % | 79.4% | 80.2% | 81.5% | 83.8% | 82.2% |
| | # | 4,112 | 3,079 | 2,839 | 2,462 | 2,268 |
| Age 46 to 50 | % | 80.8% | 80.6% | 81.7% | 84.6% | 84.1% |
| | # | 2,735 | 2,122 | 2,158 | 1,834 | 1,569 |
| Age 41 to 45 | % | 80.3% | 81.2% | 82.1% | 83.9% | 81.4% |
| | # | 2,742 | 2,211 | 2,441 | 2,191 | 1,855 |
| Age 36 to 40 | % | 77.8% | 79.6% | 80.1% | 82.8% | 82.0% |
| | # | 2,907 | 2,806 | 2,679 | 2,523 | 2,177 |
| Age 31 to 35 | % | 78.4% | 78.9% | 79.3% | 81.3% | 80.5% |
| | # | 3,653 | 3,639 | 3,986 | 3,671 | 3,553 |
| Age 26 to 30 | % | 75.8% | 75.5% | 77.4% | 80.4% | 77.9% |
| | # | 6,864 | 7,035 | 6,999 | 6,639 | 6,528 |
| Age 21 to 25 | % | 73.2% | 74.0% | 74.4% | 75.3% | 75.5% |
| | # | 16,278 | 16,690 | 17,755 | 17,187 | 17,110 |
| Age 19 to 20 | % | 75.3% | 75.1% | 76.4% | 78.5% | 77.1% |
| | # | 19,703 | 20,354 | 19,419 | 17,616 | 17,504 |
| Age 0 to 18 | % | 75.4% | 76.9% | 76.0% | 78.4% | 76.9% |
| | # | 12,347 | 11,173 | 10,249 | 9,037 | 8,612 |

| | | Spring | | | | |
|-------------------|---|--------|---------|--------|--------|--------|
| | | 2009 | 2010 | 2011 | 2012 | 2013 |
| Female | % | 76.9% | 77.5% | 77.9% | 80.3% | 79.3% |
| | # | 39,618 | 37,226 | 36,024 | 33,536 | 32,802 |
| Male | % | 74.7% | 74.5% | 75.7% | 77.1% | 75.6% |
| | # | 31,751 | 31,791 | 31,808 | 29,057 | 28,230 |
| Unknown | % | 73.7% | 7683.0% | 75.1% | 75.7% | 79.4% |
| | # | 1,457 | 1,105 | 1,728 | 1,334 | 875 |
| | | | | | | |
| Unknown Ethnicity | % | 76.9% | 78.3% | 78.7% | 81.2% | 82.0% |
| | # | 7,121 | 6,841 | 3,771 | 2,548 | 2,047 |
| Pacific Islander | % | 68.5% | 71.7% | 74.2% | 73.5% | 73.1% |
| | # | 536 | 505 | 414 | 324 | 242 |
| Native American | % | 67.5% | 68.0% | 70.9% | 76.3% | 76.9% |
| | # | 893 | 768 | 698 | 620 | 485 |
| Hispanic | % | 72.6% | 74.3% | 72.9% | 75.5% | 75.1% |
| | # | 11,238 | 11,004 | 11,704 | 11,391 | 12,006 |
| Black | % | 70.4% | 68.8% | 68.6% | 74.2% | 69.2% |
| | # | 2,062 | 1,946 | 1,954 | 1,840 | 1,664 |
| Asian | % | 80.0% | 83.1% | 81.8% | 81.6% | 81.8% |
| | # | 3,005 | 2,751 | 2,571 | 2,376 | 2,097 |
| White | % | 77.0% | 76.9% | 78.6% | 80.4% | 79.2% |
| | # | 45,537 | 42,421 | 41,334 | 36,866 | 34,523 |
| | | | | | | |
| Overall | % | 75.8% | 76.1% | 76.8% | 78.8% | 77.6% |
| | # | 72,826 | 70,122 | 69,560 | 63,927 | 61,907 |

Source: PRPP Student Equity Report

Persistence of students from term to term**New Students who Persist Three Consecutive Semesters**

Cohort 03/04-08/09 04/05-09/10 05/06-10/11 06/07-11/12 07/08-12/13

Overall

| | | | | | |
|-------------|-------|-------|-------|-------|-------|
| SRJC | 72.8 | 67 | 71.1 | 66.4 | 69.2 |
| Cohort size | 2,170 | 1,915 | 2,641 | 2,560 | 2,741 |
| State | 70.9 | 70.6 | 70.1 | 70.3 | 70.5 |

| | | | | | |
|------------------|-------|-------|-------|-------|-------|
| White | 72.9 | 66.2 | 71.4 | 67.8 | 69.7 |
| Cohort size | 1,423 | 1,291 | 1,744 | 1,645 | 1,745 |
| Asian | 69.1 | 68.2 | 78.3 | 69.9 | 77 |
| Cohort size | 94 | 88 | 138 | 123 | 135 |
| Black | 70.7 | 69.5 | 72.7 | 74.7 | 75.8 |
| Cohort size | 58 | 59 | 77 | 87 | 95 |
| Hispanic | 75.9 | 69.3 | 70.8 | 61.8 | 63.6 |
| Cohort size | 344 | 277 | 431 | 421 | 483 |
| Native American | 51.7 | 78.9 | 51.7 | 61.8 | 75 |
| Cohort size | 28 | 19 | 29 | 34 | 24 |
| Pacific Islander | 70 | 76.5 | 61.1 | 50 | 80 |
| Cohort size | 20 | 17 | 18 | 18 | 25 |
| Filipino | 87.9 | 59.3 | 75 | 61.8 | 65.4 |
| Cohort size | 33 | 27 | 24 | 38 | 26 |

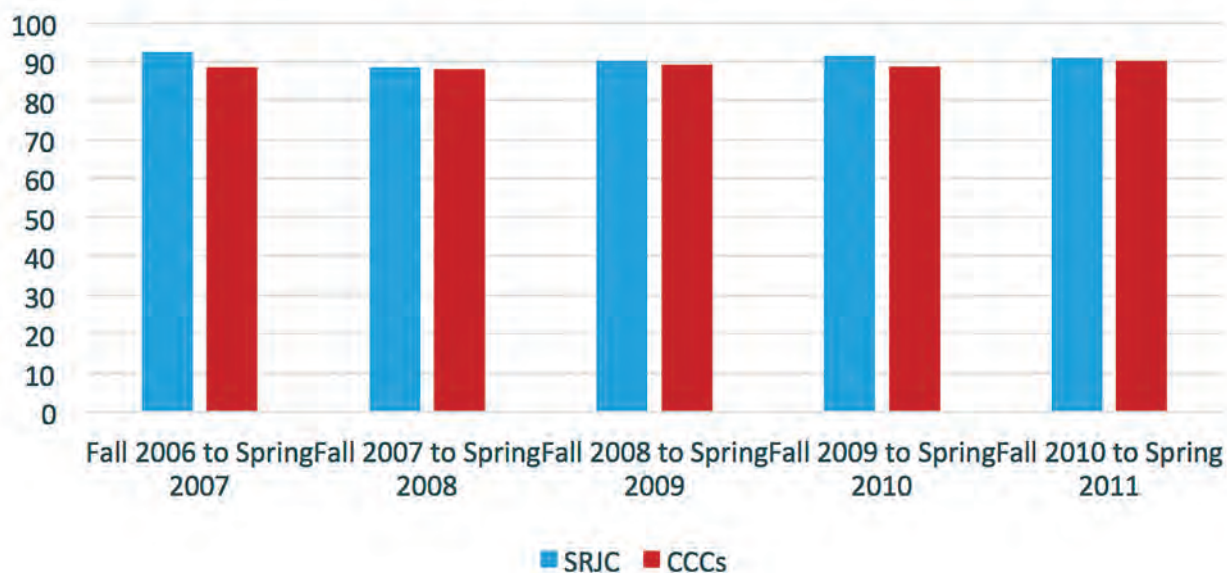
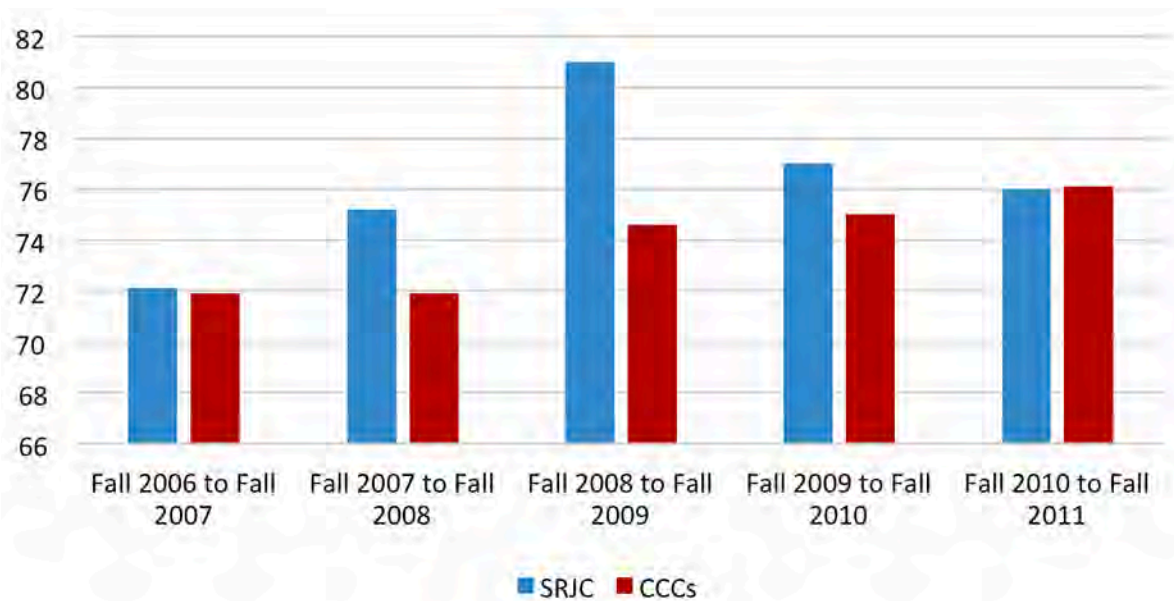
| | | | | | |
|-------------|-------|------|-------|-------|-------|
| Female | 73.4 | 66.3 | 71 | 66.4 | 69 |
| Cohort size | 1,106 | 987 | 1,371 | 1,302 | 1,418 |
| Male | 71.9 | 67.9 | 71.4 | 66.4 | 69.5 |
| Cohort size | 1,052 | 920 | 1,262 | 1,247 | 1,316 |

| | | | | | |
|--------------------|------|------|------|------|------|
| < 20 years old | 73 | 67.2 | 71.3 | 66.4 | 69.4 |
| Cohort size | 1803 | 1613 | 2355 | 2291 | 2441 |
| 20 to 24 years old | 69.2 | 63.8 | 66.2 | 66.9 | 63.4 |
| Cohort size | 159 | 127 | 130 | 133 | 134 |
| 25 to 39 years old | 73.5 | 67.5 | 73.4 | 66.4 | 73.8 |
| Cohort size | 131 | 112 | 100 | 87 | 106 |
| 40+ years old | 73.7 | 66.7 | 61.5 | 57.1 | 47.1 |
| Cohort size | 77 | 63 | 56 | 49 | 60 |

| | | | | | |
|--------------------------|-------|-------|-------|-------|-------|
| Disabled Students (DSPS) | 72.8 | 66.4 | 71.1 | 65.7 | 68.7 |
| Cohort size | 136 | 105 | 142 | 167 | 183 |
| Non-Disabled Students | 72.3 | 75 | 71.4 | 72.9 | 74.4 |
| Cohort size | 2,034 | 1,810 | 2,499 | 2,393 | 2,558 |

| | | | | | |
|---------------------------|-------|-------|-------|-------|-------|
| BOG eligible (low income) | 73.1 | 70.5 | 70.7 | 67.3 | 68.4 |
| Cohort size | 678 | 618 | 796 | 773 | 874 |
| Non-BOG eligible | 72.5 | 64 | 71.5 | 65.6 | 70 |
| Cohort size | 1,492 | 1,297 | 1,845 | 1,787 | 1,867 |

Source: ARCC Report, <http://scorecard.cccco.edu/scorecard.aspx>SRJC Institutional Effectiveness report - <http://www.santarosa.edu/administration/planning/institutional-effectiveness.php>
<http://accreditation.santarosa.edu/>

Fall to Spring Persistence Rate for Basic Skills Students**Fall to Fall Persistence Rate for Basic Skills Students**

Source: Institutional Effectiveness Report -

<http://www.santarosa.edu/administration/planning/institutional-effectiveness.php>

Note: Basic Skills Accountability Report last published 2012

Student Progress – Students Completing 30 or more units

| Cohort | 03/04-08/09 | 04/05-09/10 | 05/06-10/11 | 06/07-11/12 | 07/08-12/13 |
|--------------------|-------------|-------------|-------------|-------------|-------------|
| Overall | | | | | |
| SRJC | 70.6 | 68.6 | 70.7 | 69.8 | 71.5 |
| Cohort size | 2,170 | 1,915 | 2,641 | 2,560 | 2,741 |
| State | 65 | 64.9 | 65.9 | 66.3 | 66.5 |
| White | 71.3 | 68.4 | 71 | 70.5 | 73.6 |
| Cohort size | 1,423 | 1,291 | 1,744 | 1,645 | 1,745 |
| Asian | 75.5 | 72.7 | 73.2 | 69.1 | 74.1 |
| Cohort size | 94 | 88 | 138 | 123 | 135 |
| Black | 60.3 | 71.2 | 70.1 | 67.8 | 72.6 |
| Cohort size | 58 | 59 | 77 | 87 | 95 |
| Hispanic | 66.6 | 65.7 | 67.7 | 66 | 63.1 |
| Cohort size | 344 | 277 | 431 | 421 | 483 |
| Native American | 53.6 | 63.2 | 62.1 | 70.6 | 62.5 |
| Cohort size | 28 | 19 | 29 | 34 | 24 |
| Pacific Islander | 75 | 64.7 | 77.8 | 55.6 | 80 |
| Cohort size | 20 | 17 | 18 | 18 | 25 |
| Filipino | 84.8 | 77.8 | 75 | 73.7 | 73.1 |
| Cohort size | 33 | 27 | 24 | 38 | 26 |
| Female | 71.2 | 69.5 | 72.1 | 69 | 72.3 |
| Cohort size | 1,106 | 987 | 1,371 | 1,302 | 1,418 |
| Male | 69.7 | 67.4 | 69.3 | 70.4 | 70.8 |
| Cohort size | 1,052 | 920 | 1,262 | 1,247 | 1,316 |
| < 20 years old | 72.4 | 70.2 | 72.6 | 71 | 72.2 |
| Cohort size | 1,803 | 1,613 | 2,355 | 2,291 | 2,441 |
| 20 to 24 years old | 61.6 | 63.8 | 50.8 | 62.4 | 68.7 |
| Cohort size | 159 | 127 | 130 | 133 | 134 |
| 25 to 39 years old | 62.4 | 58.6 | 60.1 | 57.4 | 67.8 |
| Cohort size | 131 | 112 | 100 | 87 | 106 |
| 40+ years old | 57.9 | 50 | 46.2 | 50 | 29.4 |
| Cohort size | 88 | 63 | 56 | 49 | 60 |

Source: ARCC Report, <http://scorecard.cccco.edu/scorecard.aspx>

Source: Institutional Effectiveness Report -

<http://www.santarosa.edu/administration/planning/institutional-effectiveness.php><http://accreditation.santarosa.edu/>

Student Progress – Students Completing 30 or more units

Cohort 03/04-08/09 04/05-09/10 05/06-10/11 06/07-11/12 07/08-12/13

Overall

| | | | | | |
|--------------|-------------|-------------|-------------|-------------|-------------|
| SRJC | 70.6 | 68.6 | 70.7 | 69.8 | 71.5 |
| Cohort size | 2,170 | 1,915 | 2,641 | 2,560 | 2,741 |
| State | 65 | 64.9 | 65.9 | 66.3 | 66.5 |

| | | | | | |
|-------------------------|-------------|-------------|-------------|-------------|-------------|
| White | 71.3 | 68.4 | 71 | 70.5 | 73.6 |
| Cohort size | 1,423 | 1,291 | 1,744 | 1,645 | 1,745 |
| Asian | 75.5 | 72.7 | 73.2 | 69.1 | 74.1 |
| Cohort size | 94 | 88 | 138 | 123 | 135 |
| Black | 60.3 | 71.2 | 70.1 | 67.8 | 72.6 |
| Cohort size | 58 | 59 | 77 | 87 | 95 |
| Hispanic | 66.6 | 65.7 | 67.7 | 66 | 63.1 |
| Cohort size | 344 | 277 | 431 | 421 | 483 |
| Native American | 53.6 | 63.2 | 62.1 | 70.6 | 62.5 |
| Cohort size | 28 | 19 | 29 | 34 | 24 |
| Pacific Islander | 75 | 64.7 | 77.8 | 55.6 | 80 |
| Cohort size | 20 | 17 | 18 | 18 | 25 |
| Filipino | 84.8 | 77.8 | 75 | 73.7 | 73.1 |
| Cohort size | 33 | 27 | 24 | 38 | 26 |

| | | | | | |
|---------------|-------------|-------------|-------------|-------------|-------------|
| Female | 71.2 | 69.5 | 72.1 | 69 | 72.3 |
| Cohort size | 1,106 | 987 | 1,371 | 1,302 | 1,418 |
| Male | 69.7 | 67.4 | 69.3 | 70.4 | 70.8 |
| Cohort size | 1,052 | 920 | 1,262 | 1,247 | 1,316 |

| | | | | | |
|---------------------------|-------------|-------------|-------------|-------------|-------------|
| < 20 years old | 72.4 | 70.2 | 72.6 | 71 | 72.2 |
| Cohort size | 1,803 | 1,613 | 2,355 | 2,291 | 2,441 |
| 20 to 24 years old | 61.6 | 63.8 | 50.8 | 62.4 | 68.7 |
| Cohort size | 159 | 127 | 130 | 133 | 134 |
| 25 to 39 years old | 62.4 | 58.6 | 60.1 | 57.4 | 67.8 |
| Cohort size | 131 | 112 | 100 | 87 | 106 |
| 40+ years old | 57.9 | 50 | 46.2 | 50 | 29.4 |
| Cohort size | 88 | 63 | 56 | 49 | 60 |

Source: ARCC Report, <http://scorecard.cccco.edu/scorecard.aspx>

Source: Institutional Effectiveness Report -

<http://www.santarosa.edu/administration/planning/institutional-effectiveness.php>

Student Progress – Career Technical Education Completion

| Cohort | 03/04-08/09 | 04/05-09/10 | 05/06-10/11 | 06/07-11/12 | 07/08-12/13 |
|---------------------------|-------------|-------------|-------------|-------------|-------------|
| Overall | | | | | |
| SRJC | 52.5 | 53.2 | 54.8 | 54.5 | 54.1 |
| Cohort size | 1,727 | 1,617 | 1,649 | 1,716 | 1,689 |
| State | 54.1 | 54.2 | 54.4 | 54.9 | 53.9 |
| White | 54.3 | 55.5 | 58.5 | 57 | 56.4 |
| Cohort size | 1,177 | 1,088 | 1,060 | 1,096 | 1,126 |
| Asian | 52.9 | 67.6 | 47.9 | 57.3 | 61.4 |
| Cohort size | 70 | 71 | 94 | 103 | 83 |
| Black | 60 | 50 | 50 | 55.2 | 53.3 |
| Cohort size | 56 | 36 | 44 | 58 | 45 |
| Hispanic | 45.5 | 39.4 | 43.7 | 44.3 | 42.9 |
| Cohort size | 242 | 251 | 268 | 246 | 247 |
| Native American | 50 | 43.8 | 47.4 | 51.7 | 60 |
| Cohort size | 12 | 16 | 19 | 29 | 10 |
| Pacific Islander | 46.2 | 62.5 | 62.5 | 50 | 33.3 |
| Cohort size | 13 | <10 | <10 | <10 | 12 |
| Filipino | 68.2 | 73.7 | 44.8 | 69 | 53.5 |
| Cohort size | 22 | 19 | 29 | 29 | 30 |
| Female | 55.5 | 55.6 | 55.3 | 58.2 | 56 |
| Cohort size | 908 | 838 | 846 | 904 | 889 |
| Male | 49.3 | 50.8 | 54.1 | 50.6 | 51.7 |
| Cohort size | 810 | 770 | 802 | 808 | 791 |
| < 20 years old | 61.8 | 63.8 | 62.8 | 64.3 | 65.8 |
| Cohort size | 617 | 654 | 645 | 704 | 690 |
| 20 to 24 years old | 51.9 | 56.3 | 61.7 | 56.1 | 52.3 |
| Cohort size | 337 | 339 | 316 | 342 | 331 |
| 25 to 39 years old | 45 | 41.3 | 43.4 | 43.1 | 42.5 |
| Cohort size | 431 | 366 | 414 | 390 | 397 |
| 40+ years old | 46.5 | 36.4 | 48 | 45.2 | 44.9 |
| Cohort size | 342 | 258 | 274 | 280 | 271 |

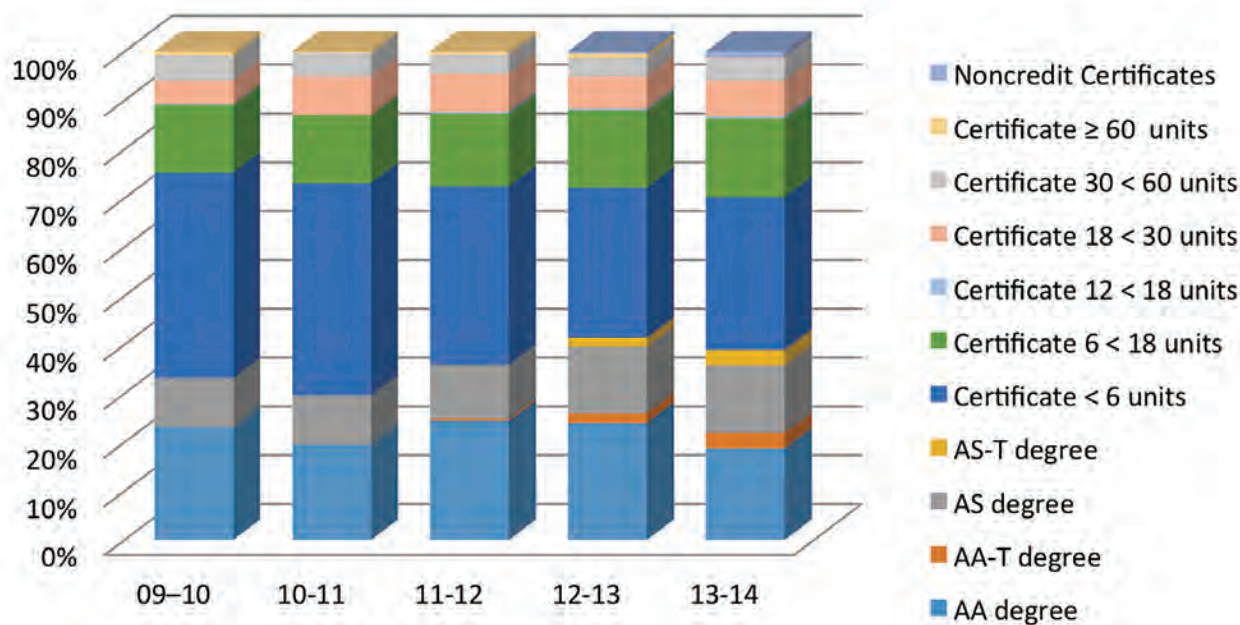
Source: ARCC Report, <http://scorecard.cccco.edu/scorecard.aspx>

Source: Institutional Effectiveness Report -

<http://www.santarosa.edu/administration/planning/institutional-effectiveness.php>

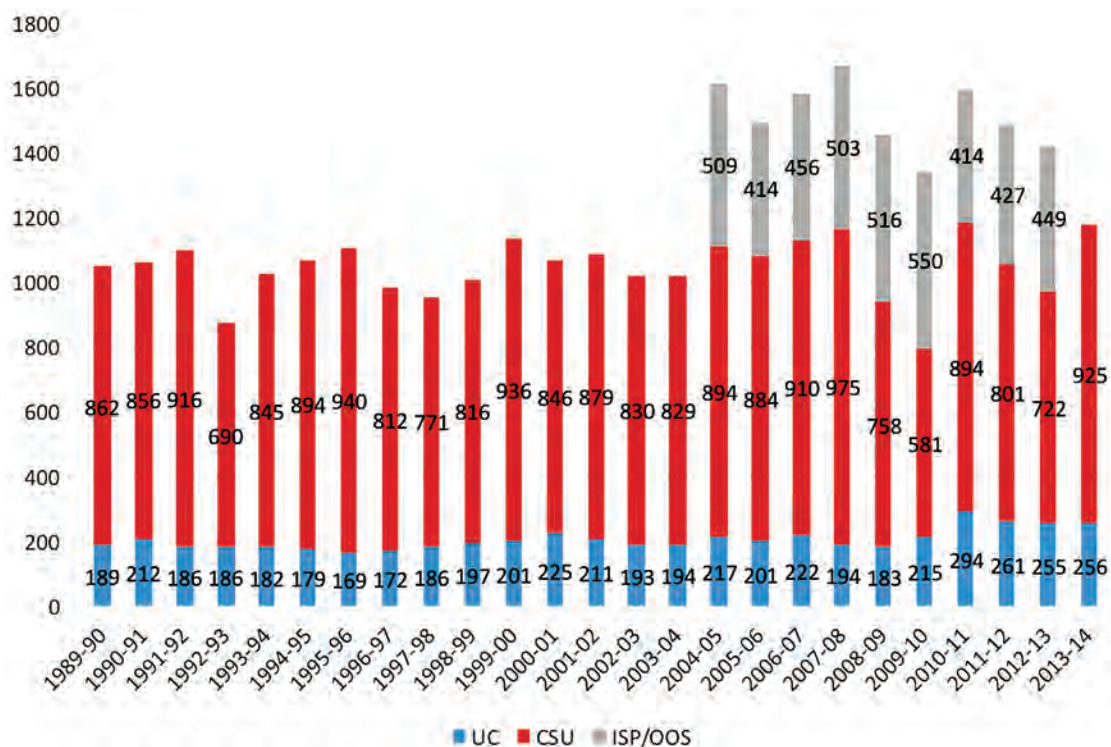
Appendix C: Data on Graduates

Degrees and Certificates Awarded 2009-10 to 2013-14



Source: SRJC Fact Book - <http://www.santarosa.edu/research/fact-books.php>

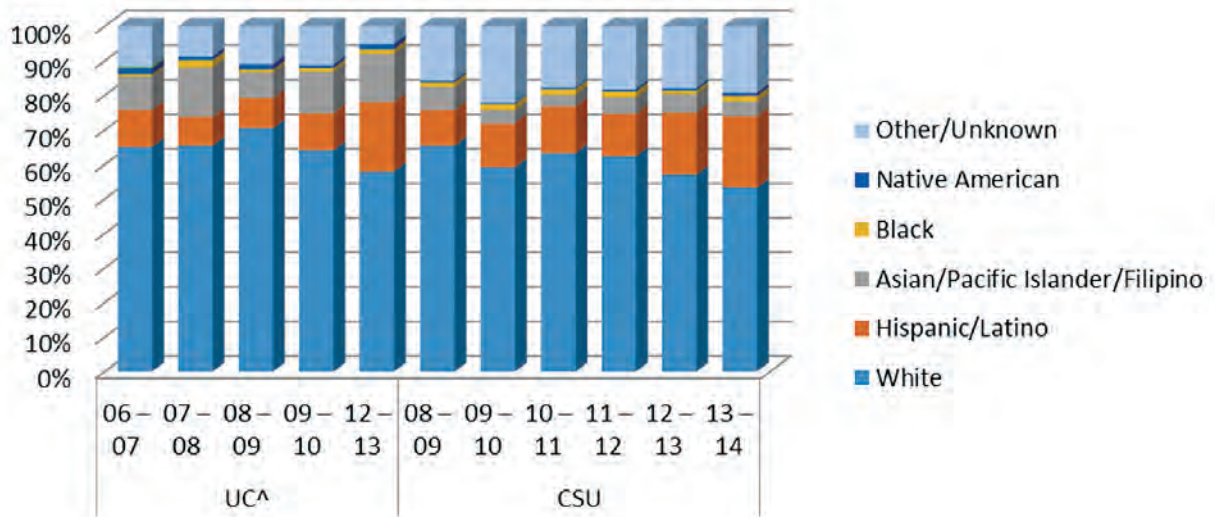
SRJC Transfer students to US, CSU, and ISP/OOS



Source: SRJC Fact Book - <http://www.santarosa.edu/research/fact-books.php>

Source: Institutional Effectiveness Report -

<http://www.santarosa.edu/administration/planning/institutional-effectiveness.php>

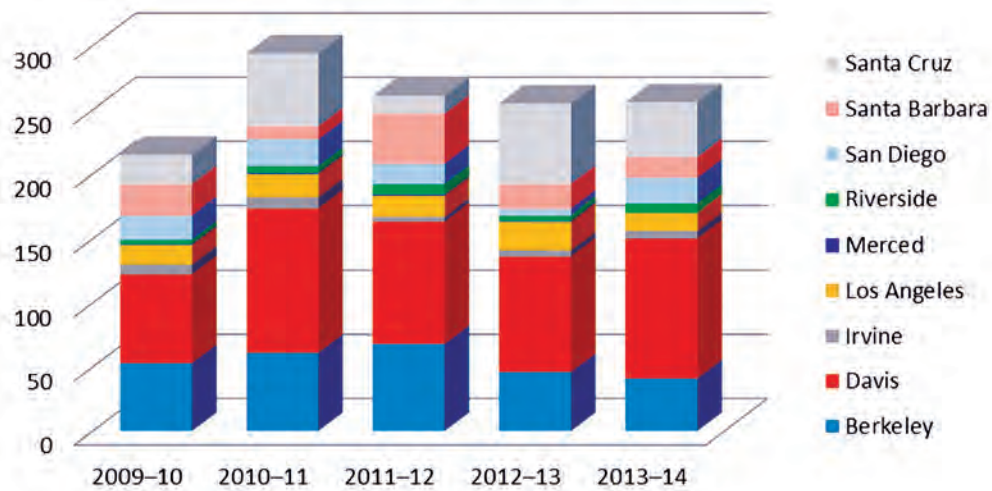
SRJC Student Transfers to UC and CSU by Ethnicity 2006-07 to 2013-14

Source: SRJC Fact Book - <http://www.santarosa.edu/research/fact-books.php>

| | | Asian/ Pacific Islander/ Filipino | | Black | | Hispanic/ Latino | | Native American | | White | | Other/ Unknown | | Grand Total |
|---------|-----|---|-------|-------|------|---------------------|-------|--------------------|------|-------|-------|-------------------|-------|----------------|
| | | # | % | # | % | # | % | # | % | # | % | # | % | |
| 2007-08 | UC | 28 | 14.4% | 4 | 2.1% | 16 | 8.2% | 2 | 1.0% | 127 | 65.5% | 17 | 8.8% | 194 |
| | CSU | 60 | 6.2% | 16 | 1.6% | 101 | 10.4% | 12 | 1.2% | 602 | 61.7% | 184 | 18.9% | 975 |
| 2008-09 | UC | 14 | 7.7% | 1 | 0.5% | 16 | 8.7% | 3 | 1.6% | 129 | 70.5% | 20 | 10.9% | 183 |
| | CSU | 51 | 6.7% | 10 | 1.3% | 78 | 10.3% | 4 | 0.5% | 496 | 65.4% | 119 | 15.7% | 758 |
| 2009-10 | UC | 26 | 12.1% | 2 | 0.9% | 23 | 10.7% | 2 | 0.9% | 138 | 64.2% | 24 | 11.2% | 215 |
| | CSU | 22 | 3.8% | 10 | 1.7% | 74 | 12.7% | 2 | 0.3% | 344 | 59.2% | 129 | 22.2% | 581 |
| 2010-11 | UC | Data not available | | | | | | | | | | | | 294 |
| | CSU | 25 | 3.5% | 11 | 1.6% | 95 | 13.4% | 3 | 0.4% | 449 | 63.3% | 126 | 17.8% | 709 |
| 2011-12 | UC | Data not available | | | | | | | | | | | | 261 |
| | CSU | 39 | 4.9% | 13 | 1.6% | 98 | 12.2% | 5 | 0.6% | 500 | 62.4% | 146 | 18.2% | 801 |
| 2012-13 | UC | 36 | 14.1% | 3 | 1.2% | 51 | 20.0% | 4 | 1.6% | 148 | 58.0% | 13 | 5.1% | 255 |
| | CSU | 39 | 5.4% | 7 | 1.0% | 130 | 18.0% | 4 | 0.6% | 412 | 57.1% | 130 | 18.0% | 722 |
| 2013-14 | UC | Data not available | | | | | | | | | | | | 255 |
| | CSU | 40 | 4.3% | 14 | 1.5% | 191 | 20.6% | 9 | 1.0% | 493 | 53.3% | 178 | 19.2% | 925 |

Source: SRJC Fact Book - <http://www.santarosa.edu/research/fact-books.php>

SRJC Transfers to the University of California
2009–10 to 2013–14

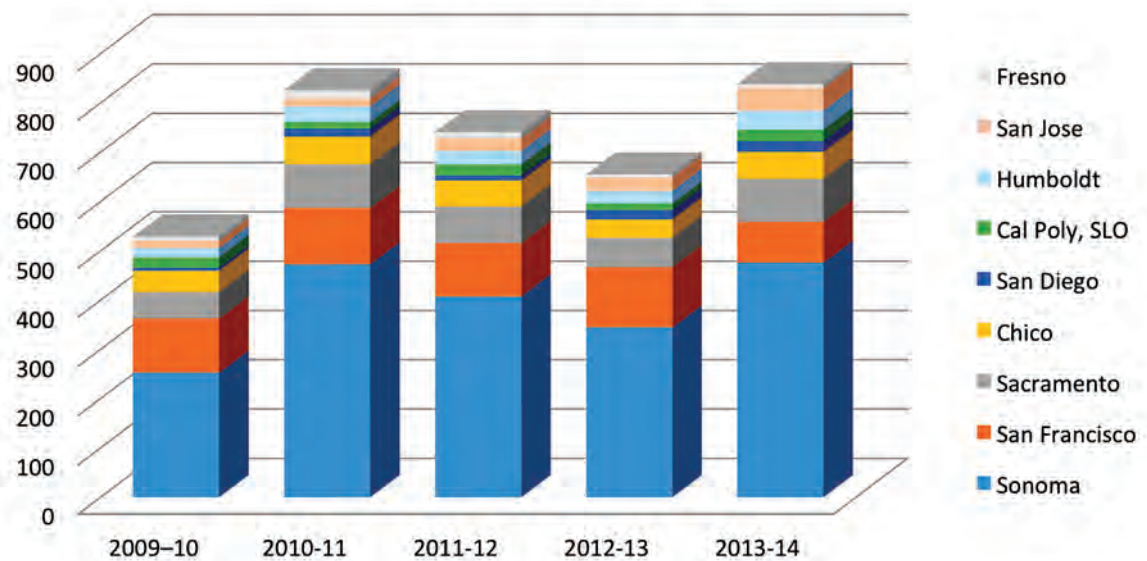


Source: SRJC Fact Book - <http://www.santarosa.edu/research/fact-books.php>

| | 2009-10 | 2010-11 | 2011-12 | 2012-13 | 2013-14 | Total | Percentage |
|---------------|------------|------------|------------|------------|------------|--------------|-------------|
| Berkeley | 53 | 61 | 68 | 46 | 41 | 2,358 | 1.0% |
| Davis | 69 | 112 | 95 | 90 | 109 | 2,868 | 1.2% |
| Irvine | 8 | 9 | 4 | 5 | 6 | 1,831 | 0.8% |
| Los Angeles | 15 | 18 | 16 | 22 | 14 | 2,616 | 1.1% |
| Merced | 1 | 1 | 1 | 1 | 0 | 119 | 0.0% |
| Riverside | 3 | 5 | 8 | 4 | 7 | 1,207 | 0.5% |
| San Diego | 19 | 21 | 16 | 5 | 20 | 2,509 | 1.0% |
| Santa Barbara | 24 | 10 | 39 | 19 | 16 | 1,397 | 0.6% |
| Santa Cruz | 23 | 57 | 14 | 63 | 43 | 991 | 0.4% |
| Total | 205 | 310 | 240 | 215 | 220 | 1,358 | 5.7% |

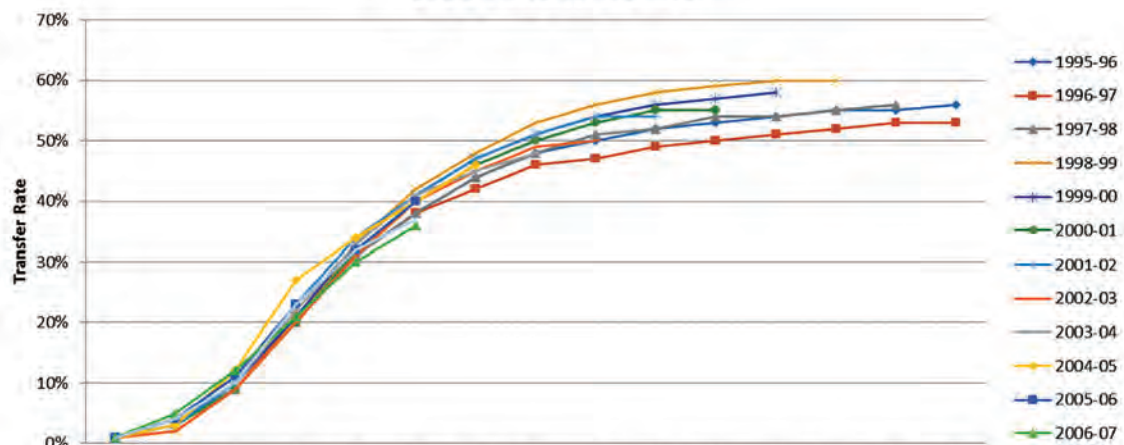
Source: SRJC Fact Book - <http://www.santarosa.edu/research/fact-books.php>

Transfers to the California State University System 2009–10 to 2013–14

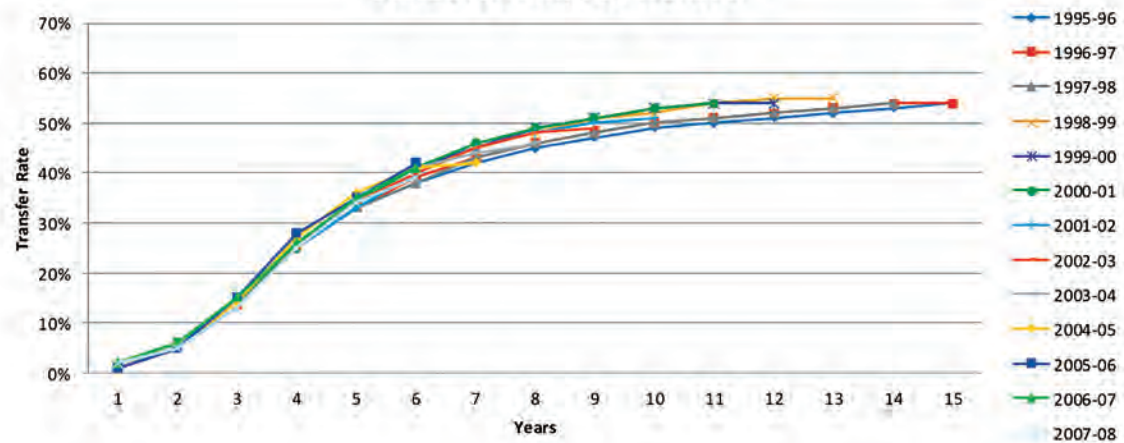


Source: SRJC Fact Book - <http://www.santarosa.edu/research/fact-books.php>

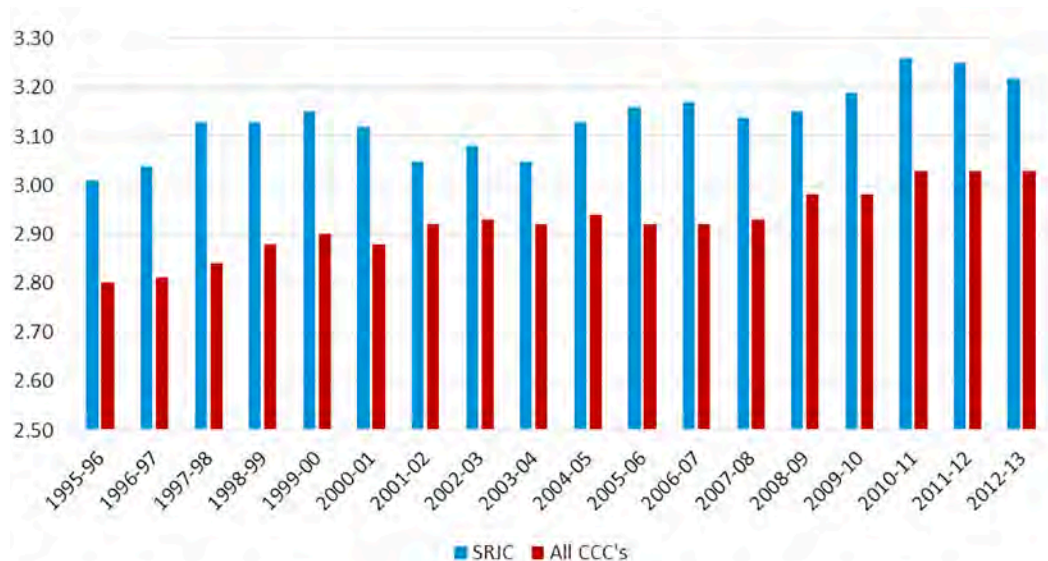
SRJC Time to Transfer



Statewide Time to Transfer



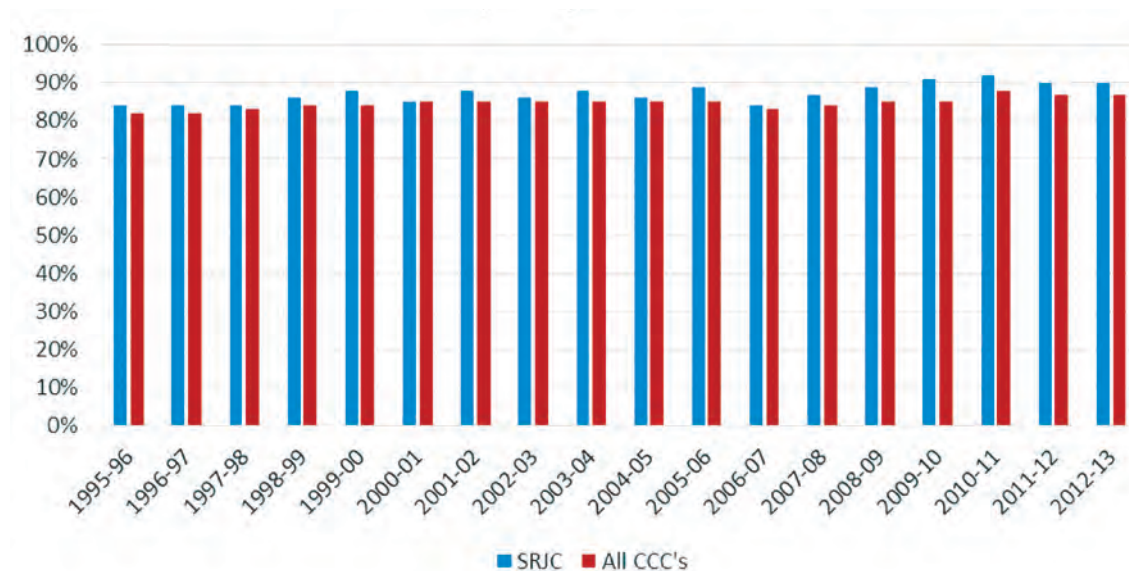
CSU GPA of California Community College Transfer Students



Source: Institutional Effectiveness Report

<http://www.santarosa.edu/administration/planning/institutional-effectiveness.php>

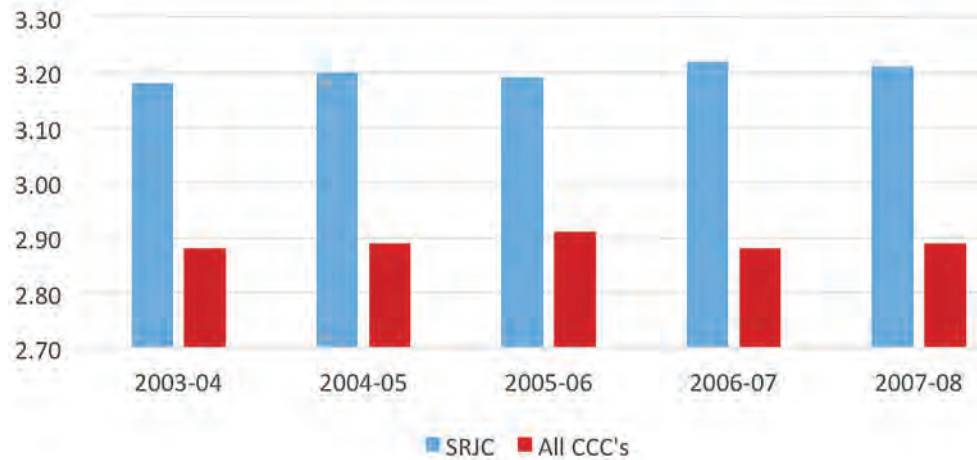
CSU One-Year Continuation Rate (Fall to Fall) for California Community College Transfer Students



Source: Institutional Effectiveness Report

<http://www.santarosa.edu/administration/planning/institutional-effectiveness.php>

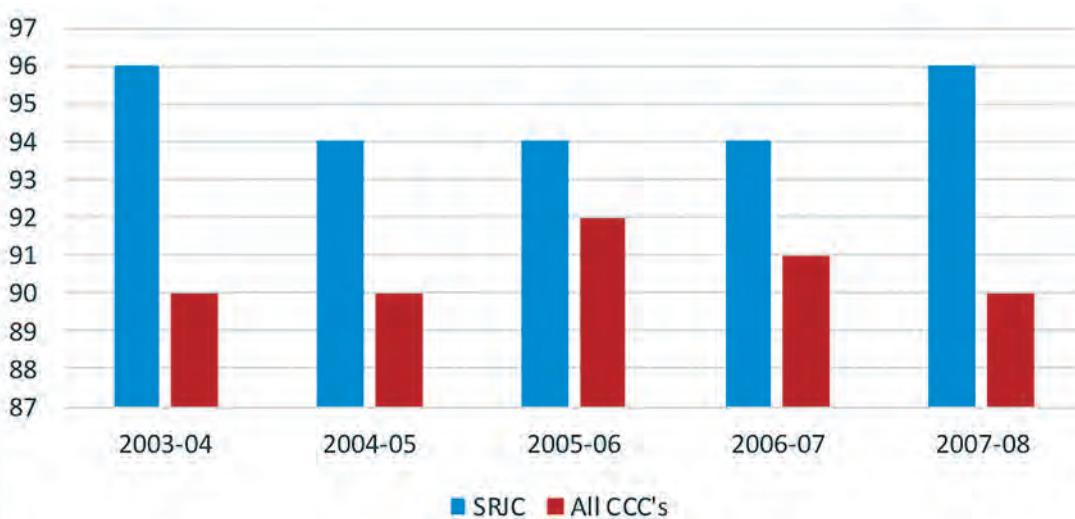
UC GPA of California College Transfer Students



Source: Institutional Effectiveness Report

<http://www.santarosa.edu/administration/planning/institutional-effectiveness.php>

UC Persistence Rate (Still enrolled at end of first year) for California Community College Transfer Students



NOTE: The University of California stopped providing this data after 2007-08 academic year.

Source: SRJC Fact Book - <http://www.santarosa.edu/research/fact-books.php>

<http://accreditation.santarosa.edu/>

Data on Graduates

Student Job Placement

| Program | CIP Code | 2010-11 | | 2011-12 | |
|---------------------------|----------|----------------------------|--------------------|----------------------------|--------------------|
| | | Institutional set standard | Job Placement Rate | Institutional set standard | Job Placement Rate |
| Basic Police Academy | 43.0107 | — | 40% | 0% | 16% |
| Paramedic Program | 43.0203 | — | — | 70% | 83% |
| Ranger Academy | 03.0208 | — | 50% | 0% | 62% |
| Nursing (ADN) | 51.3801 | — | 90% | 80% | 80% |
| Dental Assisting | 51.0601 | — | 100% | 80% | 82% |
| Dental Hygiene | — | — | 100% | 80% | 82% |
| Pharmacy Technician | 51.0805 | — | 82% | 80% | 82% |
| Radiologic Technology | 51.0911 | — | 81% | 80% | 85% |
| Vocation Nursing | 51.3901 | — | 100% | 80% | 50% |
| Dietetic Technician | 51.3103 | — | — | 75% | 80% |
| Firefighter I Academy | 43.0203 | — | — | 0% | 18% |
| Fire Tech | 43.0201 | — | 30% | — | — |
| Administration of Justice | 43.0104 | — | 34% | 0% | 38% |
| Medical Assisting | 51.0899 | — | — | 80% | 82% |
| Phlebotomy | 51.1009 | — | — | 80% | 72% |
| Certified Nursing Asst | 51.3902 | — | — | 80% | 85% |

Source: ACCJC 2013 and 2014 Annual Reports, Academic Affairs

Student Job Placement

| Program | CIP Code | 2010-11 | | | 2011-12 | | |
|------------------------------|----------|----------|----------------------------|--------------------------|----------|----------------------------|--------------------------|
| | | Exam | Institutional set standard | Licensure exam pass rate | Exam | Institutional set standard | Licensure exam pass rate |
| Associate Degree Nursing | 51.38 | National | — | 93% | National | 75% | 93% |
| Certified Nursing Assistant | 51.3908 | — | — | — | State | 0% | 93% |
| Dental Assistant | 51.06 | — | — | — | State | 100% | 100% |
| Dental Assistant | — | Other | — | 100% | — | — | — |
| Dental Assistant | — | Other | — | 94% | — | — | — |
| Dental Hygiene | — | Other | — | 100% | — | — | — |
| Dental Hygiene | — | National | — | 100% | — | — | — |
| Dental Hygiene | 51.06 | — | — | — | State | 100% | 100% |
| Medical Assisting | 51.0899 | State | — | 100% | State | 0% | 100% |
| NurseAsst/Home Health Aide | — | State | — | 100% | — | — | — |
| NurseAsst/Home Health Aide | — | Other | — | 100% | — | — | — |
| Pharmacy Technician | 51.08 | — | — | — | National | 80% | 100% |
| Phlebotomy | — | National | — | 100% | National | 0% | 100% |
| Radiologic Tech | 51 | National | — | 100% | National | 100% | 100% |
| Vocational Nursing | 51.39 | National | — | 100% | National | 100% | 100% |
| Dietetic Technician | 51.3103 | National | — | 80% | National | 70% | 80% |
| Basic Police Academy | 43.0107 | State | — | 100% | State | 80% | 0% |
| Emergency Medical Technician | 51.0904 | National | — | 100% | — | — | — |
| Firefighter 1 Academy | 43.0201 | State | — | 90% | State | 80% | 92% |
| Law Enforcement | 43.0107 | State | — | 100% | — | — | — |
| Paramedic Program | 43.0203 | — | — | — | National | 70% | 100% |
| Ranger Academy | 03.0208 | National | — | 75% | National | 0% | 67% |

Appendix D: Career and Technical Education (CTE)

Employment Outcomes Survey 2014

BACKGROUND

Skills-building students from Santa Rosa Junior College were surveyed if they met one of the following criteria in 2011-2012, and did not enroll in 2012-2013: earned a certificate of 6 or more units, earned a vocational degree, or earned 9+ CTE units. The survey was administered in early 2014 by e-mail, telephone and US mail. The survey addressed student perceptions of their CTE program, employment outcomes, and how their coursework and training relate to their current career.

2698 students were surveyed and 761 unduplicated students responded, 194 of whom responded by e-mail (25.5%), 351 by telephone (46.1%), and 216 (28.4%) by US Mail, for a total response rate of 28.2%.

Figure 1. Primary Reason for Studying

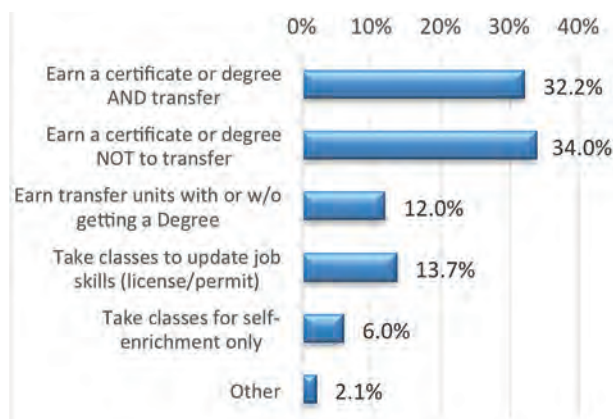
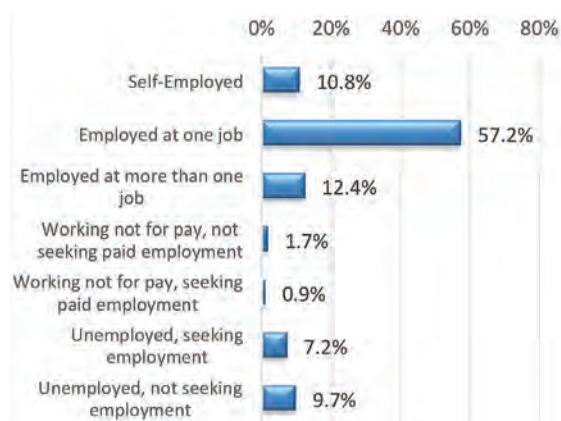


Figure 2. Current Employment Status



Results

- Respondents were asked their primary reason for studying at Santa Rosa Junior College, and the majority (66.2%) indicated earning a certificate or degree (with or without transfer). Figure 1 shows the results.
- Respondents were asked why they stopped taking classes at Santa Rosa Junior College. Here are the most frequently cited reasons, in rank order of frequency:
 - My goals were met (308)
 - I completed the program (287)
 - I got a job (167)
 - Transferred to another school (160)
- 61% of former students were "very satisfied" with the education and training they received at Santa Rosa Junior College, and 32.9% were "satisfied" for an overall satisfaction rate of 93.8%.
- 28.6% of respondents indicated they had transferred to another College or University.
- 80.4% of respondents are employed for pay. Figure 2 shows the results.
- Overall, statewide, students who transferred have 1.7 times the likelihood of being unemployed and not seeking employment (7.3% for not transferring vs. 12.2% for transferring), likely because they are enrolled at a four year institution.
- Respondents were asked, if currently employed, how closely related their job is to their field of study at Santa Rosa Junior College. 49.3% indicated they are working in the same field as their studies and training, followed 21.1% indicating they work in a field that is "close" to their studies and training, and 29.6% indicated their job is not related to their studies.
- Of those respondents who engaged in a job search after finishing their studies, 81.6% reported finding a job and 18.4% were still looking. Of those with a successful job search, 78.5% found a job within six months (60.9% within three months).
- 57 respondents (7.5%) indicated they obtained an industry certification or licensure and 18.9% indicated they obtained journey-level status in the same field of study after finishing their coursework.
- Before their studies, 47.7% of respondents worked full time. After completing their studies, 66.3% work full time. Figure 3 shows the results.

Figure 3.
Work status before studies/training and after

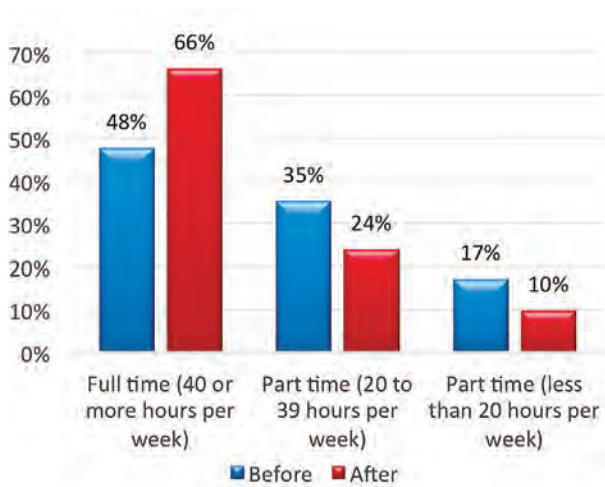
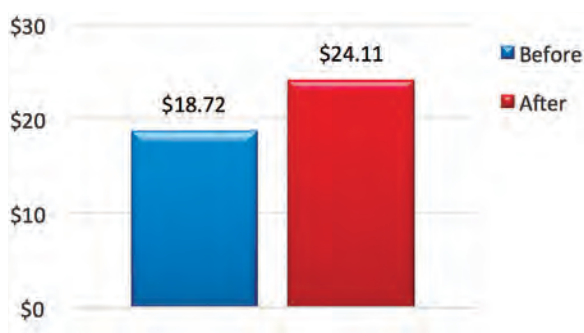


Figure 4.
Earnings before studies/training and after



- The hourly wage of all respondents increased 28.8% from their hourly wage before their studies (\$18.72) to their hourly wage after completing their studies (\$24.11). Figure 4 shows the results.
- Respondents were asked what impact their coursework had on their employment. Here are the reasons, listed in rank order of frequency:
- No impact on my employment (218)
- Enabled me to learn skills that allowed me to get a job at a new organization (174)
- Prepared me for a possible new job (174)
- Enabled me to learn skills that allowed me to stay in my current job (92)
- Enabled me to learn skills that allowed me to get a promotion at my same organization (54)
- Enabled me to start my own business (33)

Summary and Conclusions

The results of the survey showed that completing CTE studies and training – whether or not a credential is earned, whether or not a student transfers – is related to positive employment outcomes. The preponderance of respondents are employed, are working in the same field as their studies or training, and are working full time. Respondents overall posted a 28.8% increase in their hourly wage after completing their studies at Santa Rosa Junior College and the vast majority were satisfied with the education and training they received



